

SIMPLY CLEVER

ŠKODA



# The ŠKODA Rapid



Effective: May 2014



## Welcome to the ŠKODA Rapid

The ŠKODA Rapid was the first car to truly embody ŠKODA's new design language, characterised by clean lines and sharp angles. The stunning lines of the car allow light and darkness to interplay, creating a dynamism and timeless elegance.

At the same time, the Rapid remains very loyal to ŠKODA's core values, offering outstanding space, fantastic value for money and a car which has been designed at every stage with the driver and passengers in mind.

Read on to find out more about the Rapid's stunning exterior design, ample useable space and abundance of thoughtful features and equipment.







## The ŠKODA Rapid

Timeless. Precise. Dynamic.



## Rapid Exterior

The Rapid was the first model to embody ŠKODA's new design language, characterized by crisp lines that help to define the clean surfaces.

The new ŠKODA design DNA features crystalline lines, surfaces and angles which are inspired by traditional Bohemian crystal production – proudly remembering ŠKODA's strong Czech heritage. Like the Rapid, Bohemian crystal is recognised by its sharp and precise angles which emphasise light and shade.







The face of Rapid has been designed to give a strong, **broad road presence**. The dark fascia contrasts perfectly with the chrome grille surround, creating a modern, yet timeless look. The new grille has the traditional 19 fins found on all ŠKODAs, but it is now an integral part of the model's nose and is not lifted with the bonnet.

A honeycomb grille brings a **sporty edge** to the Rapid's look whilst the wide, angular lights visually widen the front giving a more dominating look.



ŠKODA's **fresh new badge** takes pride of place on the Rapid's bonnet. In chrome and black, it ties back in to the light and darkness created by Rapid's sharp lines and angles.



Rapid's side profile is not typical of a **roomy hatchback**, but is more like a **sleek coupe**. The black B pillar visually lengthens the car, whilst the strong shoulder line of Rapid is defined and precise, giving the car a powerful dynamism and the appearance of being in motion, even when stationary.



The rear of Rapid is where the marriage of **modern style and functionality** is most evident. The strong shoulder line meets the distinctive ŠKODA C-shaped rear light and crystalline angles dissect the large boot opening ensuring a strong appearance without being bulky.





**A remarkable 550 litres of storage space** (530 litres with a spare wheel) is made even more cavernous **with the rear seats down, offering 1490 litres of space.** Add a wide hatchback opening and optional bag hooks and removable side storage panels and this Rapid really is ready for anything you throw at (or in) it.

As well as offering comfort, this armrest opens to offer yet another **clever storage solution.** (Standard on Elegance, optional on S, SE and Sport).



The **rear seat armrest** with an integrated **holder for two drinks** gives rear seat passengers the opportunity to enjoy the ride with refreshments. (Optional on SE, Sport and Elegance).

On those odd occasions when even the Rapid's vast boot isn't enough space, **through load provision gives** you added flexibility. (Optional on SE, Sport and Elegance).



The **Net Programme**, which consists of two vertical nets and one horizontal net on the floor, enables you to easily secure items so they do not shift while driving (Optional).



**Glasses storage compartment,** (standard on SE, Sport and Elegance).





The Rapid's interior is ergonomically designed to ensure your driving experience is as comfortable as possible, with all controls within easy reach. In keeping with the exterior design, the interior is **precise** with **sharp** angles but also, **spacious and functional**. Everything that a ŠKODA customer has come to expect. With **phenomenal head room** and **outstanding rear knee space**, this car is perfect for both business trips and family time.

Model shown is not UK spec.

Reflecting the curve of the steering wheel, the **instrument panel** is clearly laid out and provides key driving data. The trip computer on S shows the time, gear change recommendation and fuel gauge. The Maxi Dot computer from SE also shows average fuel consumption and allows the car's electronic system settings to be adjusted.



'Amundsen' satellite navigation is available as an option on SE, Sport and Elegance. 'Amundsen' has integrated maps for Western Europe and a 5" touchscreen and comes with **digital radio (DAB)**.



The **7-speed DSG** (Direct Shift Gearbox), supplied with the 1.4 TSI 122PS and 1.6 TDI CR 90PS engine, combines the advantages of mechanical and conventional automatic transmissions.

When changing gear, the DSG is able to keep the engine at optimal revolutions, resulting in **fast and smooth gear change** and improved fuel efficiency.



Manual **air conditioning** is standard from SE, but should you wish you can upgrade to climate control air conditioning which will maintain the temperature you select by regulating the fan speed.



## ŠKODA Simply Clever Features

At every stage of its production, the Rapid's designers have kept the driver and passengers in mind. The result of this thoughtfulness is "**Simply Clever**" features throughout the car. Just little things to help make your life easier.

This handy storage compartment under the front seat easily holds a **safety vest** so if you do need it, it is always close to hand (vests available to purchase through ŠKODA Genuine Accessories).



**Ticket holder at A-pillar.** Happily holds parking permits and tickets.

**Reversible boot floor.** This smart feature lets you easily choose between a carpet or rubber boot floor. Taking suitcases to the airport? Go for carpet. Transporting wet wellies and a muddy dog? Flip it to rubber! (Optional).



Every Rapid comes with an **ice scraper in the fuel filler cap** for those cold winter mornings.



**MDI (mobile device interface)** Optional on S, standard on SE, Sport and Elegance, connect your mp3 player through the USB and control the music through your stereo controls.



**Luggage holder hooks in boot.** (Optional as part of the boot package).

## ŠKODA Rapid Safety

The Rapid has been built with a proven array of safety features. Whilst you hopefully won't need them, you can feel comfortable knowing that should you find yourself in an extreme situation, you can rely on the Rapid.



**Driver and passenger front, side and curtain airbags.** Should an impact occur, large-volume airbags activate in conjunction with the front seat belt pretensioners. This will anchor you in the middle of the seat and cushion you to reduce injury.



**ESC incl. ABS, MSR, ASR, EDS & HBA.** Electronic Stability Control is designed to stabilise the dynamic handling response of the vehicle by counteracting any tendency towards oversteer or understeer.

**Cornering front fog lights** increase visibility at low speeds by illuminating the area the car is about to turn into (standard on Elegance).



Families that fully occupy the car will certainly appreciate the option of equipping the car with a **third headrest in the rear**, designed for the passenger in the middle seat.



# ŠKODA GreenLine Technology

The ŠKODA GreenLine vehicles reflect our continuous effort to reduce CO2 emission levels. The **Rapid GreenLine** features, amongst other modifications, the Start-Stop system and energy recovery functionality. It is powered by the **1.6 TDI CR 90PS**, achieving a CO2 emission level of a mere **99 g/km**.

The GreenLine version can be identified by the original badge on the front grille.



The **Start-Stop system** automatically switches off the engine, for example while waiting at the traffic lights or when moving slowly in a queue of cars. By pressing the clutch pedal the engine automatically restarts. The driver can deactivate the Start-Stop system with a button located on the central console. Engine load reduction and more economical running are further assisted by the **energy recovery functionality**, which enables an effective use of the car's kinetic energy for battery recharging.



The GreenLine version has **15" 'Carme' alloy wheels as standard** with low rolling resistance tyres.

The original **GreenLine badge** can be found on the front grille and boot.





## The ŠKODA Rapid S

	CO <sub>2</sub> (g/km)	VED Band*	Insurance Group (50)	Recommended Basic	VAT	RRP	Recommended OTR*	Business user information	
								BiK 2014/15	P11D Value
1.2 75PS	137	E	7E	£10,412.50	£2,082.50	£12,495.00	£13,190.00	20%	£13,005.00
1.2 TSI 86PS	119	C	10E	£11,179.17	£2,235.83	£13,415.00	£13,980.00	16%	£13,925.00
1.2 TSI 86PS GreenTech	114	C	10E	£11,387.50	£2,277.50	£13,665.00	£14,230.00	15%	£14,175.00
1.6 TDI CR 90PS	114	C	13E	£12,741.67	£2,548.33	£15,290.00	£15,855.00	18%	£15,800.00
1.6 TDI CR 90PS DSG	118	C	13E	£13,708.33	£2,741.67	£16,450.00	£17,015.00	19%	£16,960.00
1.6 TDI CR 105PS	114	C	16E	£13,220.83	£2,644.17	£15,865.00	£16,430.00	18%	£16,375.00

### Standard Equipment

#### EXTERIOR

15" 'Dakara' steel wheels  
(6J x 15 185/60 R15 H)  
Chrome surround radiator grille

#### INTERIOR

Central console with cupholder  
Dust & pollen filter  
Outdoor temperature gauge  
Passenger vanity mirror on sunscreen  
Rear backrest split & folding (60/40)  
Storage compartments  
in door panelling  
Two interior lights

#### SAFETY

3 point rear seat belts x3  
Airbags  
-Driver & Passenger front  
-Driver & Passenger side  
-Curtain  
-Passenger airbag  
deactivation switch  
Alarm with interior monitoring,  
back up horn, towing protection  
& SAFE system  
Anti-misfuel insert  
(petrol engines)  
Daylight running lights  
(with deactivation)  
Disc brakes rear (except 1.2 75PS)  
Driver seatbelt warning light  
ESC incl. ABS, MSR, ASR, EDS & HBA  
Fuel cut off in event of an accident  
Height adjustable halogen headlights  
Height adjustable headrests  
(2x front, 2x rear)  
ISOFIX preparation on back seats  
Remote central door locking  
Safety vest holder  
Third rear brake light  
Two tone horn  
Tyre Pressure Monitor  
Tyre repair kit (no spare wheel)

#### COMFORT & CONVENIENCE

12V socket on central console  
4 loudspeakers  
Electric windows in front  
Electrically heated  
& adjustable door mirrors  
Gear change recommendation  
Heated rear window  
Height & reach adjustable  
steering wheel  
Height adjustable driver's seat  
Holder for parking tickets  
Power steering  
Radio 'Swing' - 2 DIN with CD  
player (can play MP3 files on CD)  
(second aerial)  
Windscreen wipers (front & rear) with  
washers & intermittent control

#### SERVICING & WARRANTY

3 years / 60,000 mile warranty  
(extended warranty is available)  
Flexible servicing (Fixed servicing is  
also available - see page 43)

#### GREENTECH ONLY

Brake energy recovery  
Stop/start system



\* Please see page 42 for further details on VED and OTR.

For offers visit [skoda.co.uk/offers](http://skoda.co.uk/offers)

## The ŠKODA Rapid GreenLine

	CO <sub>2</sub> (g/km)	VED Band*	Insurance Group (50)	Recommended Basic	VAT	RRP	Recommended OTR*	Business user information	
								BiK 2014/15	P11D Value
1.6 TDI CR 90PS	99	A	13E	£14,375.00	£2,875.00	£17,250.00	£17,815.00	15%	£17,760.00

### GreenLine (over S)

#### EXTERIOR

15" 'Carme' alloys with anti theft  
wheel bolts (6J x 15 185/60 R15 H)  
Front fog lights  
GreenLine badges on front  
grille and boot  
Optimised rolling resistance tyres  
Sunset glass

#### INTERIOR

Decorative inserts - Piano white

#### COMFORT & CONVENIENCE

Manual air conditioning  
Maxi-dot trip computer

#### SAFETY

Single tone horn



\* Please see page 42 for further details on VED and OTR.

For offers visit [skoda.co.uk/offers](http://skoda.co.uk/offers)



## The ŠKODA Rapid SE

	CO <sub>2</sub> (g/km)	VED Band*	Insurance Group (50)	Recommended Basic	VAT	RRP	Recommended OTR*	Business user information	
								BiK 2014/15	P11D Value
1.2 TSI 86PS	119	C	10E	£11,970.83	£2,394.17	£14,365.00	£14,930.00	16%	£14,875.00
1.2 TSI 86PS GreenTech	114	C	10E	£12,179.17	£2,435.83	£14,615.00	£15,180.00	15%	£15,125.00
1.2 TSI 105PS	125	D	13E	£12,554.17	£2,510.83	£15,065.00	£15,630.00	18%	£15,575.00
1.2 TSI 105PS GreenTech	116	C	13E	£12,762.50	£2,552.50	£15,315.00	£15,880.00	16%	£15,825.00
1.4 TSI 122PS DSG	134	E	16E	£13,941.67	£2,788.33	£16,730.00	£17,425.00	19%	£17,240.00
1.4 TSI 122PS DSG GreenTech	125	D	18E	£14,150.00	£2,830.00	£16,980.00	£17,545.00	18%	£17,490.00
1.6 TDI CR 90PS	114	C	13E	£13,533.33	£2,706.67	£16,240.00	£16,805.00	18%	£16,750.00
1.6 TDI CR 90PS GreenTech	104	B	13E	£13,741.67	£2,748.33	£16,490.00	£17,055.00	16%	£17,000.00
1.6 TDI CR 90PS DSG	118	C	13E	£14,500.00	£2,900.00	£17,400.00	£17,965.00	19%	£17,910.00
1.6 TDI CR 105PS	114	C	15E	£14,012.50	£2,802.50	£16,815.00	£17,380.00	18%	£17,325.00
1.6 TDI CR 105PS GreenTech	104	B	15E	£14,220.83	£2,844.17	£17,065.00	£17,630.00	16%	£17,575.00

### Standard Equipment (over S)

#### EXTERIOR

15" 'Carme' alloys with anti theft wheel bolts (6) x 15 185/60 R15 H)  
Body coloured exterior mirrors & door handles  
Body coloured rear spoiler (1.4 TSI DSG only)  
Tinted glass

#### INTERIOR

Glasses storage compartment  
Graphite metallic inserts  
Leather 3 spoke steering wheel  
Leather handbrake lever  
Leatherette gaiter  
Pocket on rear of front seats

#### SAFETY

Front fog lights  
Hill hold control (1.4 TSI DSG and 1.6 TDI CR 90PS DSG only)

#### COMFORT & CONVENIENCE

MDI (mobile device interface)\*\*  
6 loudspeakers  
Cruise control  
Manual air conditioning  
Rear electric windows  
Trip computer MAXI DOT  
Telephone connection  
Bluetooth® GSM II



\* Please see page 42 for further details on VED and OTR.

\*\* MDI allows you to control and play your mp3 player through the car's infotainment system. This feature is not compatible with Apple devices. To use an Apple device, we recommend Bluetooth® streaming or purchasing the Apple communication cable (compatible up to iPhone 4/4S). Please speak to your local ŠKODA Retailer.

For offers visit [skoda.co.uk/offers](http://skoda.co.uk/offers)

## The ŠKODA Rapid Sport

	CO <sub>2</sub> (g/km)	VED Band*	Insurance Group (50)	Recommended Basic	VAT	RRP	Recommended OTR*	Business user information	
								BiK 2014/15	P11D Value
1.2 TSI 105PS	125	D	15E	£12,554.17	£2,510.83	£15,065.00	£15,630.00	18%	£15,575.00

### Standard Equipment (over SE)

#### EXTERIOR

17" 'Ray black' alloys with anti theft wheel bolts  
Black door mirrors  
Rear spoiler  
Sunset glass  
Front fog lights

#### INTERIOR

Sport seats  
Steel pedals  
Small leather pack



\* Please see page 42 for further details on VED and OTR.

For offers visit [skoda.co.uk/offers](http://skoda.co.uk/offers)



# The SKODA Rapid Sport





## The ŠKODA Rapid Elegance

	CO <sub>2</sub> (g/km)	VED Band*	Insurance Group (50)	Recommended Basic	VAT	RRP	Recommended OTR*	Business user information	
								BiK 2014/15	P11D Value
1.2 TSI 105PS	125	D	13E	£13,179.17	£2,635.83	£15,815.00	£16,380.00	18%	£16,325.00
1.2 TSI 105PS GreenTech	116	C	13E	£13,387.50	£2,677.50	£16,065.00	£16,630.00	16%	£16,575.00
1.4 TSI 122PS DSG	134	E	18E	£14,566.67	£2,913.33	£17,480.00	£18,175.00	19%	£17,990.00
1.4 TSI 122PS DSG GreenTech	125	D	18E	£14,775.00	£2,955.00	£17,730.00	£18,295.00	18%	£18,240.00
1.6 TDI CR 90PS	114	C	13E	£14,158.33	£2,831.67	£16,990.00	£17,555.00	18%	£17,500.00
1.6 TDI CR 90PS GreenTech	104	B	14E	£14,366.67	£2,873.33	£17,240.00	£17,805.00	16%	£17,750.00
1.6 TDI CR 90PS DSG	118	C	13E	£15,125.00	£3,025.00	£18,150.00	£18,715.00	19%	£18,660.00
1.6 TDI CR 105PS	114	C	15E	£14,637.50	£2,927.50	£17,565.00	£18,130.00	18%	£18,075.00
1.6 TDI CR 105PS GreenTech	104	B	15E	£14,845.83	£2,969.17	£17,815.00	£18,380.00	16%	£18,325.00

### Standard Equipment (over SE)

#### EXTERIOR

16" 'Dione' alloys with anti theft wheel bolts (7 x 16 215/45 R16 86H)

#### INTERIOR

Aluminium look inserts  
Chrome interior surrounds  
Floor mats - front & rear  
Front centre armrest with storage box  
Multi function steering wheel (radio & telephone controls)

#### SAFETY

Cornering front fog lights

#### COMFORT & CONVENIENCE

Acoustic rear parking sensors (x3)  
Climate control air conditioning  
Height adjustable passenger seat



\* Please see page 42 for further details on VED and OTR.

For offers visit [skoda.co.uk/offers](http://skoda.co.uk/offers)



Image shows optional red sports seats. Model shown is not UK spec



## The ŠKODA Rapid trims & wheels

### Rapid S

Standard



15" 'Dakara' steel wheels



S Onyx

Option



15" 'Carme' alloy wheels

### Rapid GreenLine

Standard

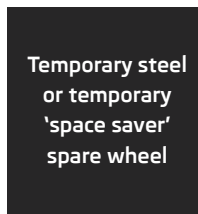


15" 'Carme' alloy wheels



S Onyx

Available on all models\*



Temporary steel or temporary 'space saver' spare wheel

See page 30 for details.

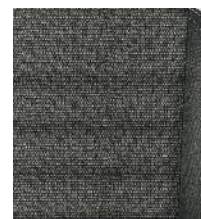
## The ŠKODA Rapid trims & wheels

### Rapid Elegance

Standard



Elegance Ivory

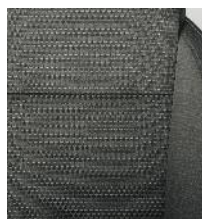


Elegance Onyx



16" 'Dione' alloy wheels

Option



Onyx/grey sports seats



Red sports seats



17" 'Camelot' alloy wheels

### Rapid SE

Standard



SE Onyx



SE Grey



15" 'Carme' alloy wheels

Option



Onyx/grey sports seats



Red sports seats



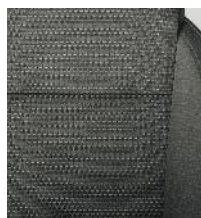
17" 'Camelot' alloys



16" 'Antia' alloy wheels

### Rapid Sport

Standard



Onyx/grey sports seats



Red sports seats



17" 'Ray black' alloy wheels



Pictures are for illustrative purposes only. Please visit your local retailer for further information.

\* Except GreenLine



# The ŠKODA Rapid colours



Candy White



Sprint Yellow



Corrida Red



Pacific Blue



Brilliant Silver metallic



Rallye Green metallic



Denim Blue metallic



Cappuccino Beige metallic



Steel grey metallic \*



Petrol Blue metallic\*



Laser white metallic



Black Magic pearl effect



Race Blue metallic



Rio Red metallic



Metal Grey metallic



Moon White metallic

\* Colour may be available on stock vehicles only. Please see your local retailer.  
 Images shown are not UK specification.  
 Because of errors which may occur in the print, the colours illustrated here may differ from the actual finishes themselves. Your ŠKODA retailer will be pleased to advise you.





## Factory Fitted Optional Equipment

Options	S	GreenLine	SE	Sport	Elegance	Basic	RRP
<b>Wheels and Towing</b>							
15" 'Carme' alloy wheels with anti-theft wheel bolts (185/60 R15 H)	○	●	●	-	-	£333.33	£400.00
16" 'Antia' alloy wheels with anti-theft wheel bolts (215/45 R16 86H)	-	-	○	-	-	£250.00	£300.00
17" 'Camelot' alloy wheels with anti-theft wheel bolts (215/40 R17 V) Upgrade from 15" wheels	-	-	○	-	-	£500.00	£600.00
17" 'Camelot' alloy wheels with anti-theft wheel bolts (215/40 R17 V) Upgrade from 16" wheels	-	-	-	-	○	£250.00	£300.00
Temporary space saver steel spare wheel for 16" or 17" wheels*	-	-	○	○	○	£62.50	£75.00
Temporary steel spare wheel for 15" wheels*	○	-	○	-	-	£62.50	£75.00
Tow bar (removable)	○	-	○	○	○	£375.00	£450.00
Tow bar preparation	○	-	○	○	○	£129.17	£155.00

<b>Exterior</b>							
Body coloured protective side mouldings	-	-	○	-	○	£62.50	£75.00
Metallic paint/Sprint yellow	○	○	○	○	○	£437.50	£525.00
Sunset glass from B-pillar back	-	●	○	●	○	£166.67	£200.00

<b>Interior</b>							
3 spoke leather steering wheel	○	○	●	●	-	£125.00	£150.00
Boot package <i>Boot net, wheel arch storage panel and boot hooks</i>	○	-	○	○	○	£83.33	£100.00
Decorative insert - Aluminium look	-	○	○	-	●	£41.67	£50.00
Decorative insert - Piano black	-	-	-	●	○	£41.67	£50.00
Decorative insert - Piano white	-	●	○	○	○	£41.67	£50.00
Double sided boot floor	○	-	○	○	○	£62.50	£75.00
Front armrest with storage box	○	○	○	○	●	£83.33	£100.00
Height adjustable passenger seat	-	-	○	○	●	£125.00	£150.00
Rear armrest with 2 cupholders and load-through provision	-	-	○	○	○	£145.83	£175.00
Simply Clever package <i>Multimedia holder, door panel waste bin, net on inner sides of front seats</i>	-	-	○	○	○	£41.67	£50.00
Smoker's pack <i>Front ashtray and lighter</i>	○	-	○	○	○	£41.67	£50.00
Sports seats <i>includes sports seats, sports pedals and piano black decorative inserts</i>	-	-	○	●	○	£250.00	£300.00
Sports seats <i>includes sports seats, sports pedals and piano black decorative inserts with Supersport multi-function steering wheel</i>	-	-	○	-	-	£437.50	£525.00
Sports seats <i>includes sports seats, sports pedals and piano black decorative inserts with Supersport multi-function steering wheel</i>	-	-	-	-	○	£354.17	£425.00
Textile floor mat set	○	-	○	○	●	£62.50	£75.00

- Not available
- Option
- Standard
- \* Spare wheels are restricted to 50mph, please note that this replaces the standard tyre repair kit
- \*\* MDI allows you to control and play your mp3 player through the car's infotainment system. This feature is not compatible with Apple devices. To use an Apple device, we recommend Bluetooth® streaming or purchasing the Apple connection cable
- † Standard on DSG models

## Factory Fitted Optional Equipment (continued)

Options	S	GreenLine	SE	Sport	Elegance	Basic	RRP
<b>Entertainment and Communication</b>							
'Amundsen' touchscreen satellite navigation with DAB digital radio	-	-	○	○	○	£458.33	£550.00
MDI (mobile device interface)**	○	-	●	●	●	£83.33	£100.00

<b>Safety and Security</b>							
Third rear headrest	○	○	○	○	○	£58.33	£70.00
Hill hold control †	○	○	○	○	○	£54.17	£65.00

<b>Driver Assistance</b>							
Rain and light assistant with auto-dimming rear view mirror	-	-	○	○	○	£166.67	£200.00
Rear parking sensors	○	○	○	○	●	£291.67	£350.00

<b>Comfort and Convenience</b>							
Climate control air conditioning	-	○	○	●	●	£250.00	£300.00
Heated front seats and heated washer nozzles	-	-	○	○	○	£166.67	£200.00
Telescopic front headlight washers	-	-	○	○	○	£83.33	£100.00

<b>Service and Warranty</b>							
1 year warranty extension <i>Total 4 years or 80,000 miles</i> ◊	○	○	○	○	○	£191.67	£230.00
2 year warranty extension <i>Total 5 years or 100,000 miles</i> ◊	○	○	○	○	○	£383.33	£460.00
Service plan <i>Total 3 years or 30,000 miles</i>	○	○	○	○	○	£399.17	£479.00



Telescopic front headlight washers (Optional on SE, Sport and Elegance)



'Amundsen' satellite navigation & digital radio (DAB) (Optional on SE, Sport and Elegance)





Sports Seats (Standard on Sport optional on SE and Elegance)

◊ For terms and conditions please see page 43.




## Personalisation with ŠKODA Genuine Accessories




**Rear Boot Spoiler** - Enhance the look of your Rapid with this specific rear boot spoiler to add a sporty feel to your Rapid. **£183**  



**Door sill covers**, black, effectively protect the door sills against mechanical damage from getting in and out of the car. **£66** 

The **Thermoelectric cooler** with a capacity of 15 litres enables you to primarily keep food fresh and refreshing. The cooler can keep items cool up to 20°C below the ambient outside temperature. Switching it to a thermobox gives you heating of 65°C. **£130**



**17" Ray black alloy wheel** **£185** each. 



**Woven carpet mats** will help you keep the car interior clean. In addition to easy care they have outstanding durability. **£42**

The **dog guard**, fitted behind the rear seats, prevents luggage from shifting into the crew cabin. This maximises luggage compartment usage or enables a safe transportation of your pets. **£180**



**Head rest coat hanger**. **£20**



**Rubber insert for the luggage compartment**, which can be easily cleaned with water, will protect upholstery from becoming dirty. **£32**




The **net programme** reliably prevents the shifting of smaller items. **£36** 

**Removable boot organiser** can be utilised for transporting light items, which can be removed quickly and easily. **£42**

These products are ŠKODA Genuine Accessories. You can also find information on the complete assortment of accessories at your authorised ŠKODA retailer.

 Price includes fitting.

 Requires painting at additional cost.



# The ŠKODA Rapid Engine Specifications

Petrol Engines	1.2 MPI 75PS	1.2 TSI 86PS	1.2 TSI 105PS	1.4 TSI 122PS DSG
Trim level	S	S/SE	SE/Sport/Elegance	SE/Elegance
Type	3-cylinder in-line engine	4-cylinder in-line engine	4-cylinder in-line engine	4-cylinder in-line engine
Transverse-mounted	Yes	Yes	Yes	Yes
Fuel injection type	Multi point fuel injection	Direct fuel injection	Direct fuel injection	Direct fuel injection
Cubic capacity (cc)	1,198	1,197	1,197	1,390
Bore x stoke (mm)	76.5 x 86.9	71.0 x 75.6	71.0 x 75.6	76.5 x 75.6
Air pollution regulation	EU 5	EU 5	EU 5	EU 5
Compression ratio	10.5:1	10.0:1	10.0:1	10.0:1
Drag co-efficient (Cw)	0.3	0.3	0.308	0.297

Performance						
Max speed mph (km/h)	109 (175)□	114 (183)□	121 (195)□	128 (205)□		
Acceleration 0-62mph (sec)	13.9	11.8	10.4	9.5		
Max . Performance (PS/rpm)	75/5,400	86/4,800	105/5,000	122/5,000		
Max. torque (Nm/rpm)	112/3750	160/1,500-3,500	175/1,550-4,100	200/1,500-4,000		
Fuel consumption mpg (l/100km)		<b>GreenTech</b>	<b>GreenTech</b>	<b>GreenTech</b>		
Urban*	34.9 (8.1)	47.9 (5.9)	43.5 (6.5)	44.1 (6.4)	40.9 (6.9)	38.2 (7.4)
Extra urban*	61.4 (4.6)	65.7 (4.3)	64.2 (4.4)	65.7 (4.3)	61.4 (4.6)	60.1 (4.7)
Combined*	47.9 (5.9)	57.7 (4.9)	55.4 (5.1)	55.4 (5.1)	52.3 (5.4)	51.4 (5.5)
CO <sub>2</sub> emissions (g/km)*	137	114	119	116	125	134

□ Where law permits.

Diesel Engines	1.6 TDI CR 90PS DPF	1.6 TDI CR 90PS DPF	1.6 TDI CR 90PS DSG DPF	1.6 TDI CR 105PS DPF
Trim level	GreenLine	S/SE/Elegance	S/SE/Elegance	S/SE/Elegance
Type	4-cylinder in-line engine	4-cylinder in-line engine	4-cylinder in-line engine	4-cylinder in-line engine
Transverse-mounted	Yes	Yes	Yes	Yes
Fuel injection type	High pressure direct injection	High pressure direct injection	High pressure direct injection	High pressure direct injection
Cubic capacity (cc)	1,598	1,598	1,598	1,598
Bore x stoke (mm)	79.5 x 80.5	79.5 x 80.5	79.5 x 80.5	79.5 x 80.5
Air pollution regulation	EU 5	EU 5	EU 5	EU 5
Compression ratio	16.5:1	16.5:1	16.5:1	16.5:1
Drag co-efficient (Cw)	0.311	0.311	0.311	0.301

Performance						
Max speed mph (km/h)	116 (186)□	114 (183)□	114 (183)□	118 (190)□		
Acceleration 0-62mph (sec)	12	12	12.2	10.6		
Max . Performance (PS/rpm)	90/4,200	90/4,200	90/4,200	105/4,400		
Max. torque (Nm/rpm)	230/1,500-2,500	230/1,500-2,500	230/1,500-2,500	250/1,500-2,500		
Fuel consumption mpg (l/100km)		<b>GreenTech</b>	<b>GreenTech</b>	<b>GreenTech</b>		
Urban*	62.8 (4.5)	58.9 (4.8)	50.4 (5.6)	57.6 (4.9)	50.4 (5.6)	
Extra urban*	83.1 (3.4)	83.1 (3.4)	76.3 (3.7)	72.4 (3.9)	80.7 (3.5)	76.3 (3.7)
Combined*	74.3 (3.8)	72.4 (3.9)	64.2 (4.4)	62.8 (4.5)	70.6 (4.0)	64.2 (4.4)
CO <sub>2</sub> emissions (g/km)*	99	104	114	118	104	114

□ Where law permits.

## Power transmission

**Clutch** Hydraulically-activated single-plate dry clutch with diaphragm spring, asbestos-free coating.

**Manual transmission** Five-speed manual transmission, fully synchronised with direct gearshift, six speed manual transmission.

**7 spd DSG transmission** - two coaxial dry multiple-disc clutch, electro-hydraulically operated.

**Please note:** With all manual gear boxes the clutch needs to be depressed to start the engine.

## Number of gears

5 speed manual 1.2 MPI 75PS,  
1.2 TSI 86PS,  
1.6 TDI CR 90PS GreenLine,  
1.6 TDI CR 90PS  
1.6 TDI CR 105PS

6 speed manual 1.2 TSI 105PS

7 speed DSG 1.4 TSI 122PS  
1.6 TDI CR 90PS

## Chassis

**Front axle/rear axle** McPherson axle with the bottom triangular control arms and independent multi-link suspension with one longitudinal and two cross arms and torsion stabiliser.

**Suspension** Coil springs, telescopic shock absorbers, rear springs located outside the shock absorbers (gas shock absorbers in rear).

**Braking system** Hydraulic dual circuit brake system with diagonal interconnection, vacuum assisted dual rate brake booster.

**Front brakes** Disc brakes, with hollow discs, internal cooling and single-piston floating calliper.

**Rear brakes** Disc brakes with full discs and single-piston floating callipers.

**Rear brakes** (1.2 75PS) Drum brakes.

**Handbrake** Mechanical handbrake operating on rear wheels.

**Steering** Direct rack and pinion steering with electromechanical power steering.

**Turning circle (m)** 10.2

## Tank

**Fuel tank content (litres)** 55 litres

**Fuel** Lead-free petrol with RON 95 or Lead-free petrol with RON 91<sup>†</sup>. Diesel (2.0 TDI CR 140PS) CZ 49.

**Body type** Five-door, five-seat, double-space steel bodywork, fully galvanized body.

## Official fuel consumption for the Rapid range in mpg (litres/100km):

**urban** 34.9 (8.1) - 62.8 (4.5);

**extra urban** 58.9 (4.8) - 83.1 (3.4);

**combined** 47.9 (5.9) - 74.3 (3.8).

**CO<sub>2</sub> Range** 137- 99 g/km

<sup>†</sup>Using low-octane fuel may affect engine performance.

We measure the maximum power output figures of our engines in PS or Pferdestärke (horse strength in German), which is the metric equivalent of bhp. To convert from metric to imperial horsepower, divide the PS figure by 1.0139.

\* Standard EU Test figures are for comparative purposes and may not reflect real driving results. Fuel consumption and CO<sub>2</sub> figures are obtained under standardised EU test conditions (Directive 93/116/EEC). This allows a direct comparison between different manufacturer models but may not represent the actual fuel consumption achieved in 'real world' driving conditions. More information is available on the ŠKODA website at skoda.co.uk and at vca.gov.org

## VED (Vehicle Excise Duty)

Band	CO <sub>2</sub> (g/km)	First 12 Months <sup>1</sup>	Standard VED <sup>2</sup>
A	Up to 100	£0	£0
B	101 - 110	£0	£20
C	111 - 120	£0	£30
D	121 - 130	£0	£110
E	131 - 140	£130	£130
F	141 - 150	£145	£145
G	151 - 165	£180	£180
H	166 - 175	£290	£205
I	176 - 185	£345	£225
J	186 - 200	£485	£265
K	201 - 225	£635	£285
L	226 - 255	£860	£485
M	Over 255	£1,090	£500

See page 42 for further details



## Measurements and Weights

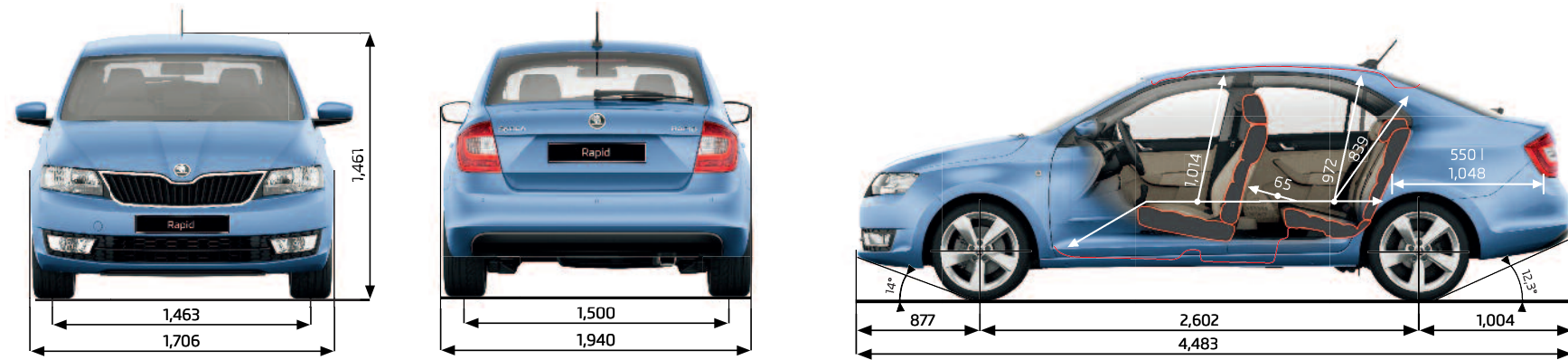
### The ŠKODA Rapid Hatchback

#### Exterior dimensions

Length (mm)	4,483
Width (mm)	1,706
Height (at kerb weight) (mm)	1,461
Wheel base (mm)	2,602
Ground clearance (at kerb weight) (mm)	136

#### Interior dimensions

Luggage capacity, seats up (litres)	550
Luggage capacity, seats down (litres)	1,490
Luggage capacity, seats down (litres) with spare wheel	530
Rear knee space (mm)	65
Rear head space (mm)	972



All figures are in mm, unless otherwise stated

	1.2 MPI 75PS Petrol	1.2 TSI 86PS Petrol	1.2 TSI 105PS Petrol	1.4 TSI 122PS DSG Petrol	1.6 TDI CR 90PS DPF Diesel (GreenLine)	1.6 TDI CR 90PS DPF Diesel	1.6 TDI CR 90PS DSG DPF Diesel	1.6 TDI CR 105PS DPF Diesel
<b>Weight</b>								
Kerb weight* (kg)	1,065	1,086	1,100	1,161	1,263	1,190	1,210	1,179
Total weight (kg)	1,600	1,621	1,635	1,696	1,723	1,725	1,745	1,714
Payload** (kg)	535	535	535	535	535	535	535	535
Max roof load (kg)	75	75	75	75	75	75	75	75
Towing unbraked (kg)	570	580	580	610	-	630	640	620
Towing braked (kg)	750	900	1,100	1,200	-	1,200	1,200	1,200
Nose weight (kg)	50	50	50	50	-	50	50	50

All measurements and weights are correct at time of going to print but may be subject to change and may vary according to passengers and load in vehicle.

\*Kerb weight is the mass of the vehicle with body work in running order.

\*\*Payload includes driver (at 75kg) & equipment.








## ŠKODA Solutions. Your journey, your choice.

ŠKODA Finance like to do things a little differently, that's why for many years we've specialised in providing simple and convenient funding options for ŠKODA drivers. It's what we know.

ŠKODA Solutions, the personal contract plan, is all about you; a flexible, competitive fixed-rate plan designed around you and your budget, putting you firmly in the Rapid driving seat.

Solutions is different because you defer a proportion of the car's value until the end of the agreement, giving you significantly lower monthly repayments than if you'd taken out a loan...ever heard of a bank being so imaginative?

Solutions is totally flexible. You get to choose the size of your deposit (from as little as one monthly payment), and a repayment period which suits you and at the end of the term you have 3 options to choose from.

- 1  Part-exchange the car for a new ŠKODA on a new Solutions contract.
- 2  Pay the optional final payment so that you own the car.\*
- 3  Circumstances changed? Return the car to us (subject to terms and conditions).



### DEPOSIT

As little as one repayment

### BALANCE

A flexible repayment period (18-42 months)

### OPTIONAL FINAL PAYMENT

3 choices at the end of the agreement

ŠKODA Finance also offers hire purchase, contract hire and service and maintenance plans.

Speak to your ŠKODA retailer for your personalised quotation today

## Free Insurance for 3 years.

No-one likes to think about their ŠKODA being damaged in an accident. But if it was you'd no doubt want it repaired to ŠKODA standards, by a ŠKODA trained technician using only ŠKODA genuine parts. Would your motor insurance provider guarantee to do that? We didn't think so...

That's why we came up with Ensurance - ŠKODA's free accident and repair cover.

Ensurance works alongside your existing comprehensive motor insurance policy, no matter who you are insured with, to help get you back on the road as smoothly as possible. Better still, it's free for three years and is available on both new and older models.

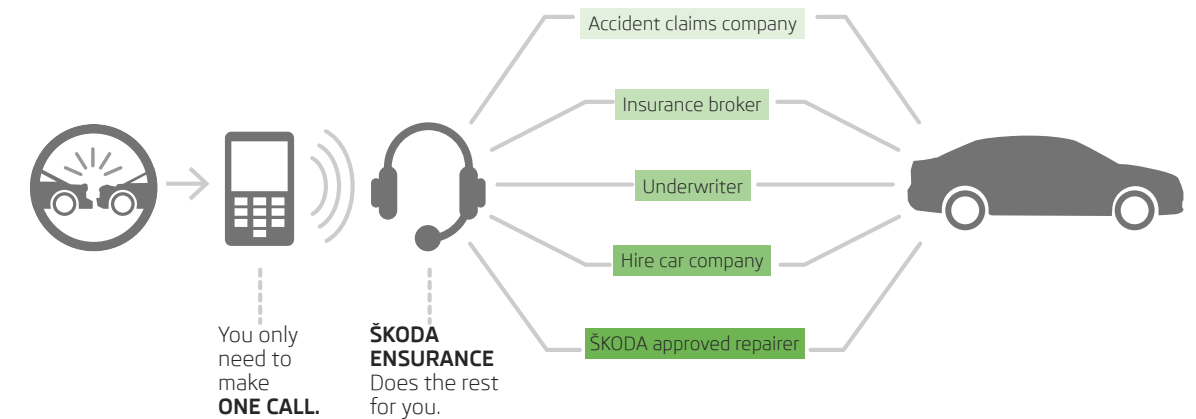
### Your free Ensurance cover includes:

- > Guaranteed use of a ŠKODA approved repairer, ŠKODA trained technicians and the use of genuine ŠKODA parts and paints
- > A dedicated Claims Manager who will look after your entire claim from start to finish
- > Help to recover any uninsured losses with our Legal Expenses Cover
- > An Online claims tracker so you can keep up to date with the status of any claim

To benefit from Ensurance you'll need to activate your free cover which takes less than a minute.

We hope you don't ever have to use your policy but it's nice to know it's there - just in case.

You only need to make one call, Ensurance deals with the rest...



Your car is **guaranteed** to be repaired by a ŠKODA Insurance approved repairer. Only **genuine** ŠKODA parts **will be used**.

For more information and to take out cover today visit [skoda-ensurance.co.uk](http://skoda-ensurance.co.uk)

\*Subject to payment of the option to purchase fee. An offer of finance depends on certain conditions. Subject to status, indemnities may be required. Available to over 18's in the UK only. ŠKODA Finance. ŠKODA Finance is a trading name of Volkswagen Financial Services (UK) Limited, Brunswick Court, Yeomans Drive, Blakelands, Milton Keynes MK14 5LR. Registered in England number 2835230.

ŠKODA Insurance motor insurance is sold, underwritten and administered by Allianz Insurance plc.

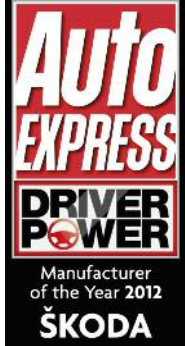


# Owning a ŠKODA

We make sure it's easy, fun, and stress-free.



ŠKODA customer service is officially award-winning. We have been voted Number 1 in four of the last five Auto Express Driver Power Surveys.



**Network capability**

You can enjoy our award-winning customer service through our network of around 160 Authorised Repairers.

As a ŠKODA customer, you will be looked after by your retailer from the moment you walk through the door and throughout the life of your ŠKODA. Your new Rapid will be serviced and maintained to the highest standards by specially trained ŠKODA technicians. And when you need a spare part, you'll be happy to know that most are held in stock, or can be ordered within 24 hours.

The ŠKODA Customer Promise is a commitment from our retailers to offer:

- > Care and consideration for you and your car
- > A flexible and convenient service
- > Expertise and attention to detail
- > A clear explanation of our work

**Roadside Assistance**

A three year, European-wide, unlimited mileage ŠKODA Assistance policy comes free of charge with every new ŠKODA.

There's a team of specially trained Technicians who carry the right diagnostic equipment and parts to get you back on the road as quickly as possible in the unfortunate event of a breakdown. They'll even help you if you fill up with the wrong fuel, lose your car keys, or get a puncture.

**Warranty**

When you buy your new ŠKODA through our authorised retailer network, it is automatically covered by a three year, 60,000 mile manufacturer's warranty.

There's no mileage limit on the warranty in the first two years and for additional peace of mind there's a 12 year body protection warranty.

You can even extend your warranty to four or five years, see the option page for prices and page 43 for further details.

Warranty cover from new			
First 2 years	First 3 years	4-5 years	Up to 12 years
Unlimited mileage	3 years or 60,000 miles, whichever is sooner	Optional Extended Warranty	Body Protection Warranty

**Further information**

You can find lots of additional information about owning a ŠKODA on our website at skoda.co.uk. Our retailers are always happy to help with any questions, backed up our dedicated Customer Service Centre. We look forward to hearing from you soon.

Call: 08457 745 745  
 Email: customerservices@skoda.co.uk  
 Open 8.30am - 5.30pm



## Technical glossary

**ABS**: the anti-lock braking system prevents the wheels from locking during heavy or emergency braking, enabling the vehicle to remain steerable. When braking, wheel speed sensors measure the road wheel speed and should one or more wheels start to lock the system reduces brake pressure to that wheel.

**Elements of the ABS System :-**

- Dual Rate Vacuum Brake Boosters:** increases brake effort under emergency braking conditions.

- EBC:** Electronic brake control. The engine brake torque control regulates the power supply by intervening with the engine management system.

- EBD** (aka EBV): Electronic Brake Distribution automatically distributes different pressures to the front and rear brakes to stop the rear wheels from locking up under heavy braking. It also compensates for loaded and unloaded vehicles therefore doing away with the need for a Load Sensing Valve on the rear axle.

**CAN Bus:** the CAN Bus is an electronic data bus which links the various different electronic control systems in the car. It ensures ideal co-ordination between systems and reduces the amount of wiring needed in the car.

**Fuel cut-out:** should one or more of the airbags inflate after an accident, this system automatically cuts out the fuel supply, thus preventing subsequent leakage of the diesel or petrol.

**Trip Computer:** the trip computer not only features an impressive range of data displays, operating it is simplicity itself. A multifunction touch key enables you to call up all relevant data on the easy-to-read display. Features include external temperature, time, current fuel consumption, average fuel consumption, miles driven and average speed.

**DPF:** diesel particulate filter is part of the exhaust system responsible for cleaning the engine exhaust gases before they enter the atmosphere. The DPF catches soot particles emitted in the exhaust gas and it works in conjunction with the catalytic converter, which reduces the amount of harmful gases entering the atmosphere. The DPF must periodically be emptied of the soot particles, a process known as regeneration. This involves elevated exhaust system temperatures. A driving style is required during regeneration, where a constant vehicle speed above 37 mph must be maintained. This does not always suit customers who make frequent short journeys or experience stop/start driving or drive within inner-city or urban areas.

**CR:** the completely new range of diesel engines are built on a system of Common-Rail fuel injection. The diesel engines have a high-pressure common rail direct injection fuel system and four-valve technology. As a result, the new engines are much quieter, more refined in their operation and consume less fuel, compared to the Pump Duse engines and significantly reduce emissions.

**ESC:** electronic stability control is designed to stabilise the dynamic handling response of the vehicle by counteracting any tendency towards oversteer or understeer. The ESC constantly compares the actual movement of the vehicle with predetermined values and according to the situation ESC reacts by braking each wheel individually (according to direction of slip) and automatically adjusting the engine’s output.

**TPM:** Draws the driver’s attention to any pressure loss in any of the tyres. Early warning can prevent damage from occurring as a result of an under inflated tyre or a defect that radically changes the cars behaviour and driveability.

**HHC:** Hill hold control allows for a safe hill start by holding the brake for a small amount of time, reducing the risk of unintentional reversing or roll back.

**Elements of ESC system:-**

- ASR:** anti-slip regulation traction control ensures the Rapid’s stability when pulling away or accelerating. If the engine power or torque being transmitted to the drive wheels is too great, for example on a slippery road surface, engine torque is automatically reduced until optimum road holding returns, thus preventing wheelspin. A light indicates whether the ASR system is on. It can be manually switched off.

- MSR:** the engine torque control system recognises when the wheels are subject to too much slippage and regulates the power supply by intervening in the engine management system. This prevents wheelspin when, for example, changing down on a smooth or wet road surface. MSR is a constituent part of the ASR system.

- EDL:** the electronic differential lock continually compares the rpm of the drive wheels, and if it identifies a difference between them which could lead to an individual wheel spinning, for example if the two wheels are on different types of surface or accelerating on wet leaves, the system brakes the wheel affected until uniform rpm of all drive wheels is restored.

## Warranty

**Exclusions and limitations**

Wear and tear components will only be considered under the terms of the warranty for the first of six months or 6,500 miles, whichever is soonest. These include, but are not limited to brake linings and disc pads, clutch release bearings, clutch pressure plates and centre plates, tyres, wiper blades, seat and backrest covers, floor coverings, spark plugs, batteries for key fobs and alarms, light bulbs and shock absorbers.

Mechanical adjustments including but not limited to adjustments to doors, flaps, boot lids, bonnets and sunroof, brake adjustment, clutch adjustment, v belt adjustment, ignition adjustment, headlight adjustment, steering geometry adjustments and wheel balancing are excluded.

**Damage (including but not limited to the following) is excluded:**

- Damage caused by your failure to take all reasonable steps to prevent mechanical damage from occurring.
- Damage or defects caused by not having the vehicle serviced in accordance with the manufacturer’s guidelines.
- Damage or defects caused by improper use of the vehicle, neglect or use of the vehicle for motor sports activities.
- Damage caused by an accident.
- Damage to paintwork or chrome caused by external influences, such as climatic, chemical or industrial pollution.
- Damage resulting from the use of non-original replacement parts.

Routine maintenance and servicing is not covered by the warranty. Incidental or consequential costs such as hotel charges, car hire, loss of personal effects or income are not recoverable under the terms of the warranty.

## Service Intervals

When you order your Rapid, you can choose whether your car is on a fixed or a flexible service regime. Your retailer will help you decide which regime suits how your car will be driven, enabling your car to stay in the best possible shape.

Fixed regime: Service every 10,000 miles or one year (whichever comes first). This is recommended if the vehicle is likely to be used in the following way:

- Driven fewer than 10,000 miles per annum **and/or**
- Mainly short journeys, drive mostly in towns or cities **and/or**
- High vehicle loading/towing and frequent hill climbs **and/or**
- Heavy accelerating and braking, using high revs

Flexible regime: Sensors in the engine detect when a service is needed. You will be informed of this by a service light which will show at any point between 9,000 and 20,000 miles, up to 24 months (whichever comes first).

The flexible service regime is recommended for vehicles with a daily mileage of more than 25 miles where the vehicle is driven regularly and mainly at a constant speed with minimum vehicle and engine loading, minimal towing and driven in an economical manner.

## Motability

People in receipt of the Higher Mobility Component of the Disability Living Allowance receive special help from ŠKODA. Preferential prices on low cost Contract Hire are available through your local approved Motability retailer. For full details, contact your retailer.

**ŠKODA Ensurance**

Ensurance from ŠKODA Insurance is sold and administered by Lawshield UK Limited, registered in England number: 3360532 (registered office: Lawshield House, 850 Ibis Court, Lakeside Drive, Centre Park, Warrington, Cheshire, WA1 1RL) and underwritten by UK General Insurance Limited on behalf of Ageas Insurance Limited, registered in England number: 354568 (registered office: Ageas House, Tollgate, Eastleigh, Hampshire, SO53 3YA).

For details of our full range of insurance products visit insurewithskoda.co.uk. For a quote call us free on 0800 316 8025. Lines are open Monday to Friday 8am – 9pm and 9am – 5pm on Saturday.

ŠKODA Insurance is a trading name of Volkswagen Insurance Service (Great Britain) Limited, an appointed representative of Volkswagen Financial Services (UK) Limited, registered in England number: 2835230 (registered office: Brunswick Court, Yeomans Drive, Blakelands, Milton Keynes MK14 5LR). ŠKODA Insurance motor insurance is sold, underwritten and administered by Allianz Insurance plc, registered in England number: 84638 (registered office: 57 Ladymead, Guildford, Surrey GU1 1DB). Both organisations are authorised and regulated by the Financial Conduct Authority (FCA), whose registration numbers are 311988 and 121849 respectively. Authorisation details can be checked on the FCA’ s register at www.fca.org.uk or by contacting the FCA on 0800 111 6768. Volkswagen Financial Services (UK) Limited and Allianz Insurance plc are not part of the same corporate group.

**OTR (Recommended On The Road)** Recommended 'On the Road' prices include delivery, 12 months Road Fund Licence, DVLA First registration Fee (at £55), and apply to the United Kingdom only.

**VED (Vehicle Excise Duty)**

All vehicles will be subject to Vehicle Excise Duty based on the fuel type of the vehicle and its carbon dioxide (CO<sub>2</sub>) emissions level, measured in grams per kilometre (g/km). Due to changes in vehicle emissions data, CO<sub>2</sub> figures may differ on these vehicles if taken from current ŠKODA UK stock. The VED bands are shown in the table opposite.

<sup>1</sup> First year vehicle licence rates for petrol and diesel cars purchased on or after 1st April 2014. First year rate or 'showroom tax' applies to new car purchases only.

<sup>2</sup> Rate reverts to the Government’s applicable Standard VED rate in subsequent years.

Edition:UK 1st April 2014. VAT is calculated at 20%. Please confirm figures with your ŠKODA Retailer.

Company car tax is based on your cars carbon dioxide emissions. The higher the car’s emissions, the higher its tax liability. When a company car is made available for private use a 'Benefit in Kind' value is calculated for tax purposes.

To help you work out your tax liability please refer to page 43.

**P11D (Expenses and Benefits)**

The P11D value is calculated by taking the On The Road (OTR) price for the vehicle, less the Road Fund Licence (RFL) and First Registration Fee (FRF).

BiK (Benefit in Kind) The BiK percentage value is based on the CO<sub>2</sub> emissions of the vehicle for the current tax year 2014/2015.

<b>Band</b>	<b>CO<sub>2</sub> (g/km)</b>	<b>First 12 Months<sup>1</sup></b>	Standard VED <sup>2</sup>
A	Up to 100	<b>£0</b>	£0
B	101 – 110	<b>£0</b>	£20
C	111 – 120	<b>£0</b>	£30
D	121 – 130	<b>£0</b>	£110
E	131 –140	<b>£130</b>	£130
F	141 – 150	<b>£145</b>	£145
G	151 – 165	<b>£180</b>	£180
H	166 – 175	<b>£290</b>	£205
I	176 – 185	<b>£345</b>	£225
J	186 – 200	<b>£485</b>	£265
K	201 – 225	<b>£635</b>	£285
L	226 – 255	<b>£860</b>	£485
M	Over 255	<b>£1,090</b>	£500





The information in this brochure referring to specification, design, equipment, material and external appearance relates to the time at which this brochure was printed. Whilst every effort is made to ensure its accuracy, the information in this brochure is not binding and is subject to alteration. Some illustrations in this brochure depict left hand drive models, with both standard and optional equipment shown. Please confirm exact specifications, prices and colour availability with your SKODA retailer who will be notified of any specification changes as they occur.

**Edition:** UK 05/14

**Information:** 08457 745 745

**Internet:** [skoda.co.uk](http://skoda.co.uk)

**E-mail:** [customerservices@skoda.co.uk](mailto:customerservices@skoda.co.uk)

Welcome to your SKODA retailer