

SIMPLY CLEVER

ŠKODA



NEW ŠKODA SUPERB



Effective: July 2015



A CAR THAT TRULY EARNS ITS NAME.

Imagine a car that blurs the line between beauty and functionality. Where style and space are in perfect harmony. Where there's room for everything except compromise. Welcome to the new ŠKODA Superb.

Sculpted by a new, more emotional, design language, the Superb takes its place at the top of the ŠKODA range. As well as being incredibly stylish, it's also the most spacious and comfortable ŠKODA yet – perfect for family and business alike. And being a ŠKODA, this car showcases our finest Simply Clever thinking, and is the most technologically sophisticated model we have ever produced.

120 ŠKODA AUTO
SIMPLY CLEVER
YEARS SINCE 1895

This car represents 120 years of forward thinking, a commitment to making cars that are as much a joy to drive now as they were back when we started. Because instead of looking back on our eventful history, we use it as an inspiration to look ahead.

That's Simply Clever. That's ŠKODA.

EXTERIOR DESIGN



TRAVEL IN STYLE.

EXTERIOR DESIGN

The ŠKODA designers responsible for the new Superb were set a clear task: to create a car revolutionary in terms of both technological sophistication and design. The result of their efforts is the new Superb; taking ŠKODA's design language to a completely new level..



Precise and horizontal lines highlight the athletic build of the new Superb. The LED technology combined with the crystalline design elements in the distinctive C-shaped rear lights further adds to the feeling of poised elegance.



The perfectly balanced proportions, coupé-like silhouette and striking headlights result in an extraordinary dynamic profile filled with emotional appeal.



The imposing lines of the bonnet are complemented by the stunning contours of the new headlights and equally crisp front fog lights - their design paying homage to the tradition of Czech glass making.



The sleek contours of the door mirrors with integrated indicators give the new Superb a sporty look, whilst maintaining total functionality.

The stylish decorative door sill trims with the Superb inscription are a clear nod to the car's overall blend of form and function.



Further enhance the feeling of space within the new Superb with the optional sunroof.



Three types of headlights and two styles of taillights are available for the new Superb, each unique in technology and style. The higher-end options celebrate the renowned Bohemian glass-cutting skills.



The Bi-Xenon headlights include decorative cut crystal high beam lights. Stylish illuminated decorative strips also feature in the headlights with the Smart light assist function.



Crystalline elements also appear in the design of the taillights. The reverse light and the LED part of the fog lights, are hidden behind decorative 'gems', making the Superb's lighting signature even more distinctive.

TRAVEL IN SPACE.

INTERIOR DESIGN

COMFORT

Loaded with thoughtful features, the new Superb delivers exceptional comfort, whether it's staying relaxed during long journeys or being entertained whilst on the move.

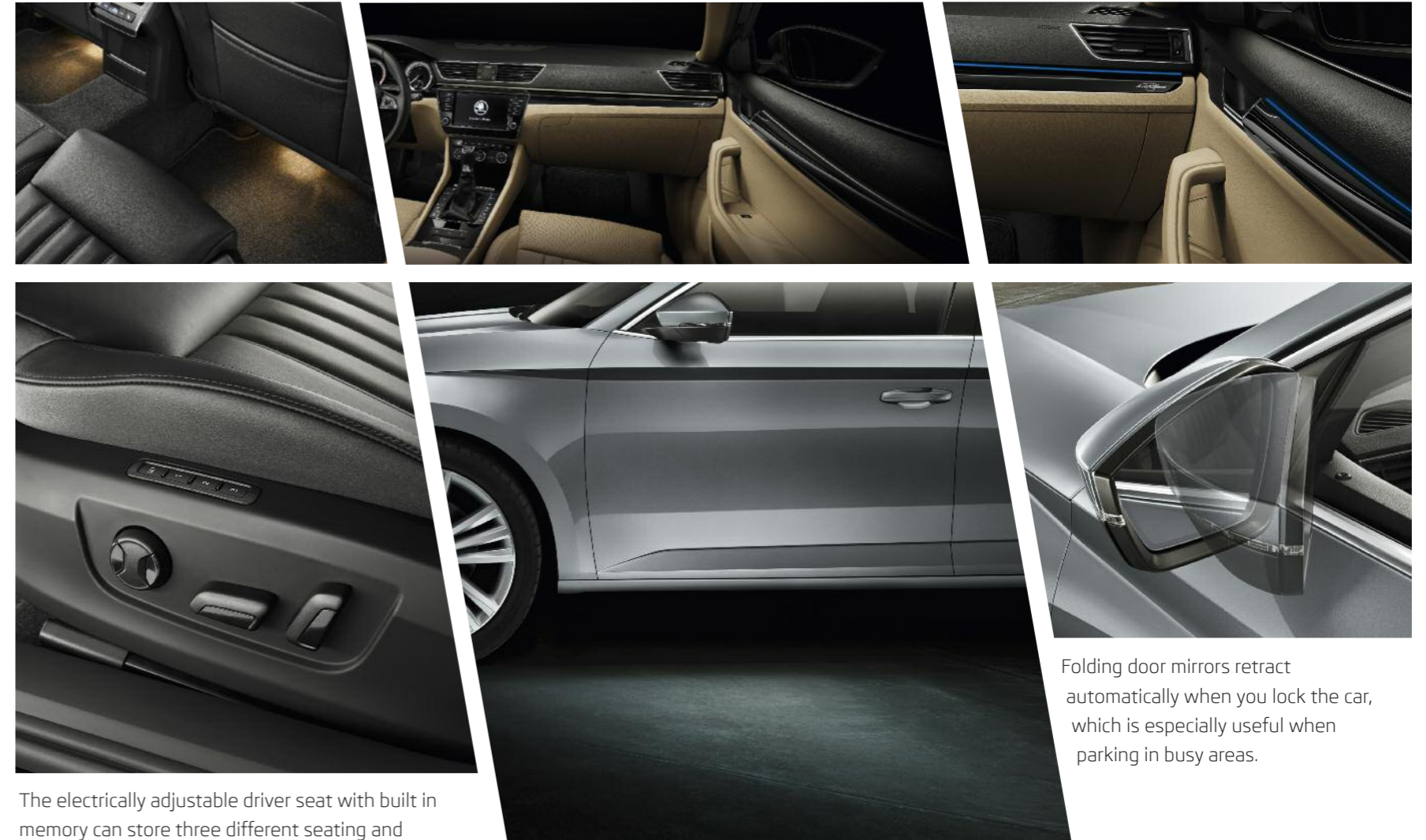


The 3 spoke multifunction steering wheel wrapped in leather and adorned with chrome elements puts sheer driving pleasure at your fingertips. For an even sportier feel it's possible to upgrade to a Supersport steering wheel in perforated leather and DSG paddles.

With Tri-zone climate control you can set different temperatures for the driver, front and rear passengers. It's also fitted with a humidity sensor, which reduces windscreen misting.

Cars equipped with KESSY (Keyless entry, start and exit system) feature a Start/Stop button on the steering column for keyless starting and switching off the engine.

Make your space more comfortable with soft, harmonious ambient lighting. These lights run along the inside of the car, setting the perfect mood for any journey.



The electrically adjustable driver seat with built in memory can store three different seating and door mirror positions.

Boarding spots are integrated into the door mirrors and are designed to illuminate the area below the door. This handy feature means you can always see where you are stepping, even in the dark.

Folding door mirrors retract automatically when you lock the car, which is especially useful when parking in busy areas.

INTERIOR STORAGE

There's a place for everything, even in your car. The new Superb features a multitude of compartments, pockets and holders, keeping your elegant interior tidy and your belongings safe.



The glovebox can also be cooled during a journey whilst the air conditioning is on.

A spacious storage compartment is housed in the front armrest, within which you can store items safely, or keep them cool. Two cup holders can also be found in the centre console.



The Superb features ingenious compartments with two original Superb umbrellas fitted inside both front doors. They are designed to let water drain away from the car keeping the interior dry.

The rear armrest also features two cup holders.

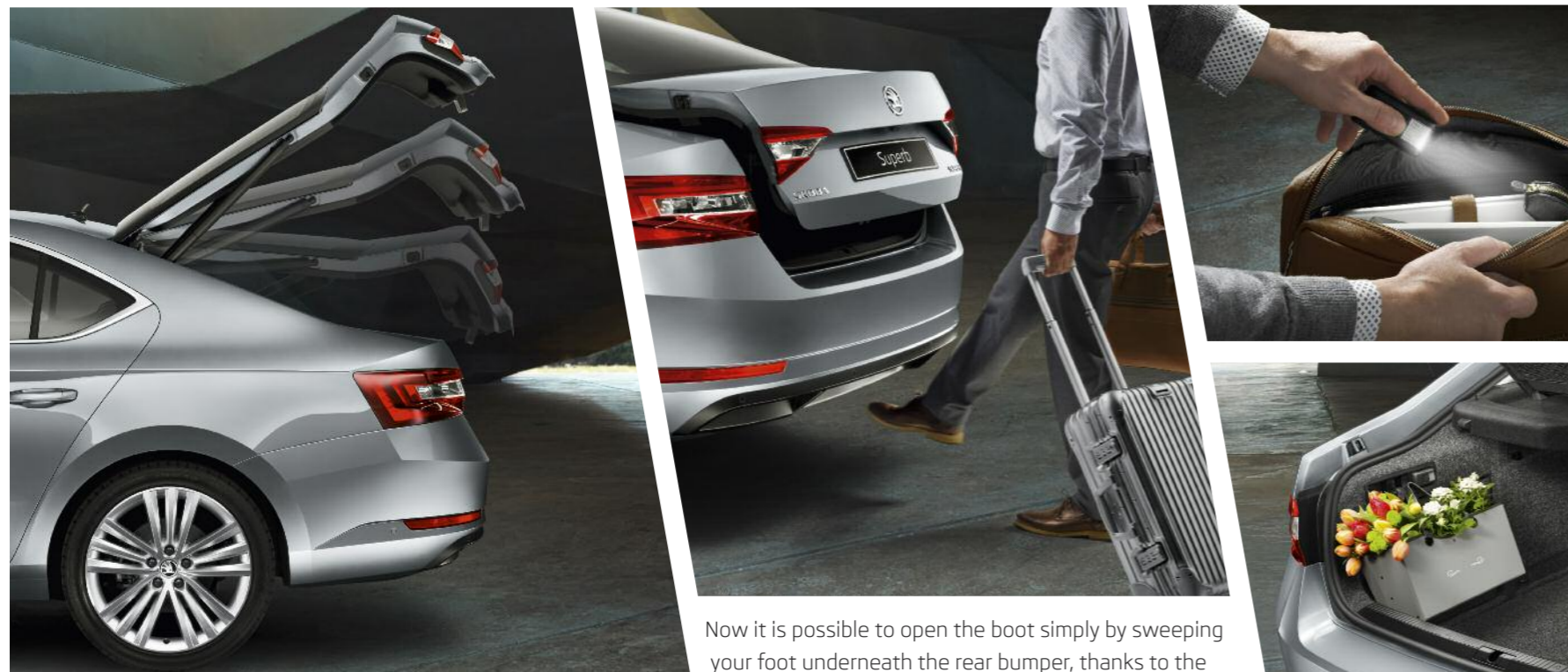


Each front door includes a 1.5 litre bottle holder within the spacious compartment.

LUGGAGE COMPARTMENT

The new Superb is at the top of its class for space; the Estate offers a capacity of 660 litres, stretched to 1,950 litres with the rear seats folded down. For added practicality we have also added Simply Clever solutions that make handling luggage even easier.

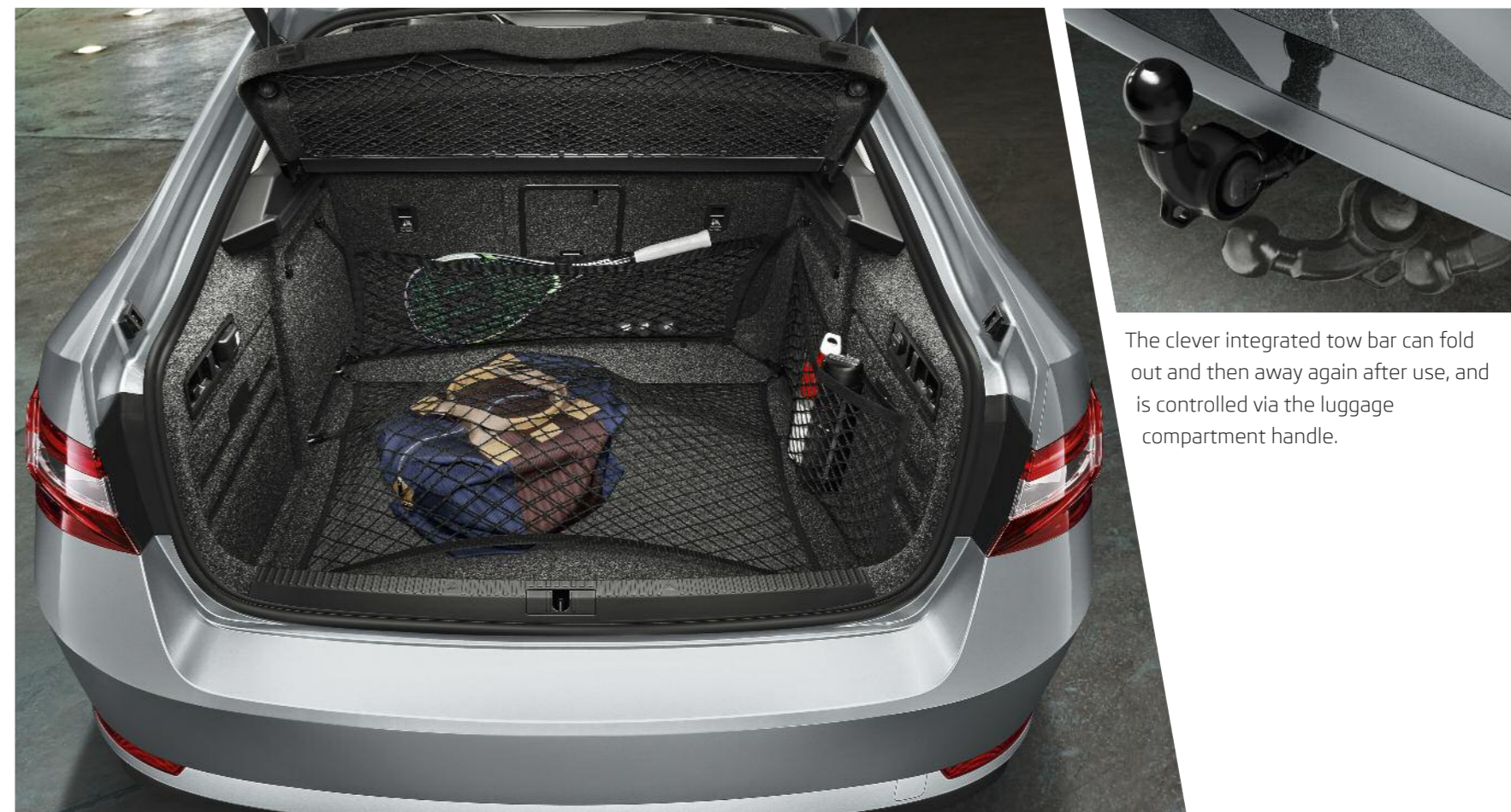
A practical removable LED flashlight can be found on the left side of the luggage compartment. It recharges automatically while the engine is running.



The electrically-operated boot door can open and close automatically without you having to touch it. You can also adjust the height of the open position to suit your needs.

Now it is possible to open the boot simply by sweeping your foot underneath the rear bumper, thanks to the new Virtual pedal. This feature enables contact-free access and is available with electrically-operated boot and KESSY (Keyless entry, start and exit system).

Foldable hooks, located on the sides of the luggage compartment, make it much easier to secure and transport items.

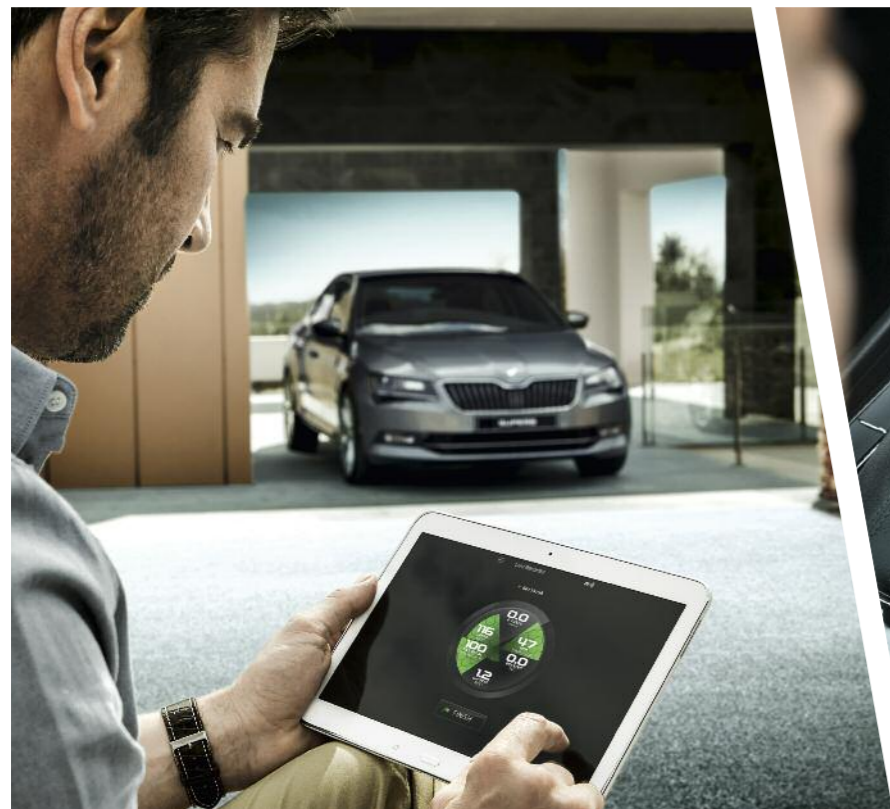


The boot net programme increases the flexibility of the luggage space while tightly securing objects. It includes one horizontal and two vertical nets.

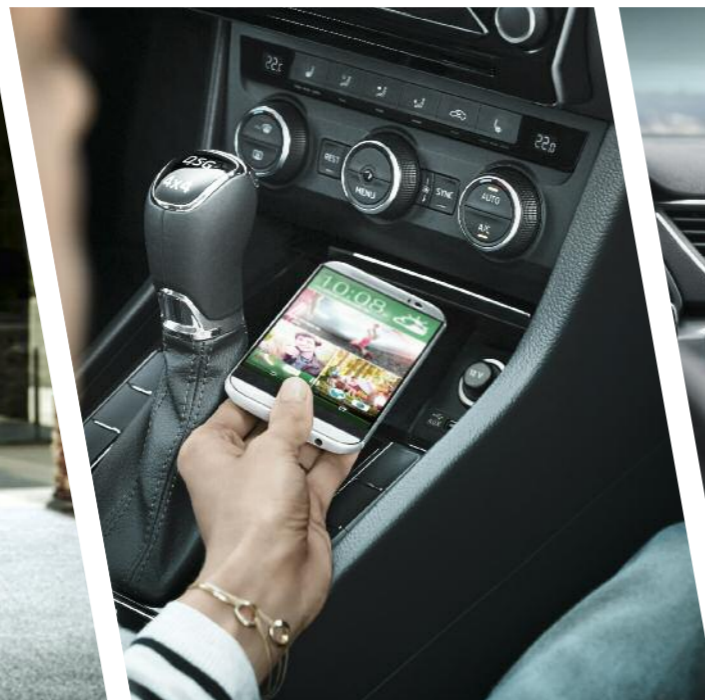
The clever integrated tow bar can fold out and then away again after use, and is controlled via the luggage compartment handle.

INFOTAINMENT

You can communicate, work or entertain yourself with ease on board the new Superb. The new generation of radio and navigation systems brings top-level connectivity so you can enjoy the best functions of your mobile devices on-the-go. Rear passengers can connect their devices, too.



SmartGate† is a system that uses Wi-Fi connection to send selected vehicle data to a connected device. Special mobile apps are available which allow you to analyse driving data and performance to find out more about your driving style. Examples of data available include vehicle speed, engine revs and g-meter. The SmartGate applications are available free of charge from app stores.



Bluetooth®+ with Phone box provides a safe place to store your phone whilst driving, and also amplifies your phone signal for better quality hands-free calls.



SmartLink† delivers an elegant connection between car and smartphone using MirrorLink™, Apple CarPlay and Android Auto interfaces. Whether you want to select and listen to music on your smartphone or receive turn-by-turn directions via a navigation app, all of this is mirrored on the central display.

The Media Command application enables you to control the infotainment in the car from your tablet or smartphone using WiFi, wherever you sit. It's available with the Columbus navigation system.



The accessory multimedia holder enables you to securely fit your device to the rear armrest or the front seat headrest, which will keep rear passengers entertained throughout any journey. For the first time, you can also turn your new Superb into a mobile Wi-Fi hotspot, which allows multiple devices to connect to the internet whilst on the move.

The Bolero radio features a 6.5" colour touch-screen display with DAB, AM and FM tuners, USB/aux-in connection, Apple connectivity, SD card slot and Bluetooth®.



Enjoy absolute sound clarity, whether it's music or the spoken word, with the Canton sound system which includes twelve speakers, including a central speaker and subwoofer in the luggage compartment.



The Columbus navigation system offers comfortable touch control on an 8" colour TFT display. It has two SD card slots, a DVD drive and includes integrated Wi-Fi as well as SmartLink†.

AIRBAGS

Safety is a priority and with 7 airbags as standard, you may certainly rely on the new Superb's passive safety systems. Should you wish, you can also add two more rear side airbags with Crew protection assist.



The knee airbag, located under the steering wheel column, protects the driver's knees and shins.

While the driver airbag is enclosed in the steering wheel, the passenger airbag is located in the dashboard. If needed, this can be deactivated whilst using a child seat in the front.

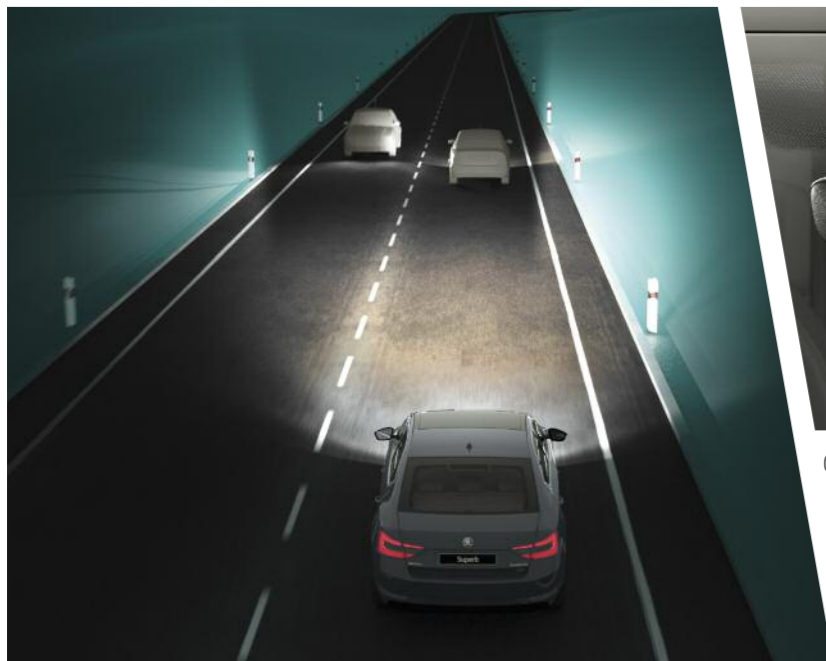


The front and rear side airbags protect the pelvis and chest of the driver and other passengers in the event of a side collision.



ASSISTANCE SYSTEMS

The new Superb puts a host of innovative assistant systems at your service, offering unrivalled convenience and greater safety than ever before.



Now you can use high beam for longer without blinding incoming traffic. The Smart light assist can not only switch between the lighting functions but can also dim the high beam, using a multifunction camera located behind the rear-view mirror.



Other assistance systems that use the multifunction camera include Lane assist, for keeping the car in the right lane, and Travel assist for traffic sign recognition and display.

Front assist, which is standard across the range, monitors distance from the vehicle ahead and automatically slows down or warns the driver of a potential danger of collision or, if a collision is inevitable, minimises its consequences by braking.

Adaptive cruise control (ACC) builds on the basic cruise control function by using the radar in the front bumper to maintain a safe distance from vehicles in front of you.

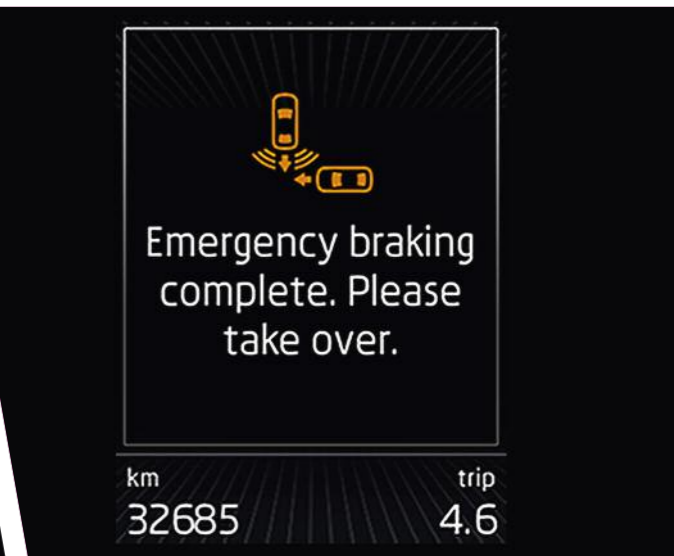
The Multi-collision brake system makes use of the Electronic stability control (ESC). If the driver's or front passenger's airbag is activated due to an impact, the system starts braking to prevent further uncontrolled movement of the vehicle and thus reduce the likelihood of further collisions.



Enjoy easier parking by equipping your car with the rear-view parking camera, which is located on the handle of the boot. It monitors the space behind the car and indicates the driving lanes, based on the vehicle width.



Minimise the hassle of parking in tight spaces with Park assist. It automatically selects an appropriate parking place in a row of parallel or perpendicularly parked vehicles. When parallel parking, it only needs a space 60 cm longer than the car itself.



Blind spot detection uses radar sensors in the rear bumper to monitor the blind areas behind and beside the car. Based on the distance and speed of the surrounding vehicles, it decides whether or not it should warn the driver, with optical or acoustic signals. The Rear traffic alert feature (shown above), using the same radar sensors, helps you reverse safely from a parking space with poor visibility. It can even engage the brakes automatically if it detects imminent danger.



The ŠKODA Superb S

| Hatchback | CO ₂ (g/km) | VED Band* | Insurance Group (50) | Recommended Basic | VAT | RRP | Recommended OTR* | Business user information | |
|-------------------|---------------------------|--------------|-------------------------|----------------------|-----------|------------|---------------------|---------------------------|---------------|
| | | | | | | | | BiK 2015/16 | P11D Value |
| 1.4 TSI 125PS | 125 | D | 14E | £15,062.50 | £3,012.50 | £18,075.00 | £18,640.00 | 20% | £18,585.00 |
| 1.6 TDI 120PS | 108 | B | 12E | £16,229.17 | £3,245.83 | £19,475.00 | £20,040.00 | 19% | £19,985.00 |
| 1.6 TDI 120PS DSG | 105 | B | 12E | £17,395.83 | £3,479.17 | £20,875.00 | £21,440.00 | 19% | £21,385.00 |
| Estate | | | | | | | | | |
| 1.4 TSI 125PS | 126 | D | 14E | £16,062.50 | £3,212.50 | £19,275.00 | £19,840.00 | 20% | £19,785.00 |
| 1.6 TDI 120PS | 109 | B | 12E | £17,229.17 | £3,445.83 | £20,675.00 | £21,240.00 | 19% | £21,185.00 |
| 1.6 TDI 120PS DSG | 105 | B | 12E | £18,395.83 | £3,679.17 | £22,075.00 | £22,640.00 | 19% | £22,585.00 |

Standard Equipment

| | | | | |
|--|---|---|---|--|
| <p>DESIGN</p> <p>16" Orion alloy wheels with anti-theft wheel bolts (16" x 6.5) with 215/60 R16 tyres)</p> <p>Body coloured door mirrors and door handles</p> <p>Halogen headlights with daytime running lights</p> <p>Front fog lights</p> <p>LED rear lights</p> <p>Radiator grille frame in black design</p> <p>Black roof rails (Estate only)</p> | <p>Glovebox (illuminated and cooled)</p> <p>Front armrest with storage box</p> <p>Overhead glasses storage compartment</p> <p>Ticket holder on A pillar</p> <p>12V sockets in centre console (front and rear)</p> <p>Split and folding rear seats</p> <p>Illuminated luggage compartment</p> <p>Interior lights with control switches</p> <p>Removable parcel shelf</p> <p>Ice scraper in fuel filler cap</p> <p>Manual air conditioning</p> <p>Height adjustable driver and front passenger seats</p> <p>Electric front and rear windows</p> <p>Electrically adjustable and heated door mirrors with integrated indicators</p> | <p>SAFETY & SECURITY</p> <p>ESC inc. ABS, EBV, MSR, ASR, EDS, HBA, DSR, RBS, CBC, multi-collision brake (MKB) & Autohold</p> <p>XDS+</p> <p>7 airbags - Front, front side, curtain, driver's knee (with front passenger deactivation switch)</p> <p>Height adjustable front and rear head restraints</p> <p>ISOFIX child seat fittings on outer rear seats</p> <p>Tyre pressure monitoring system</p> <p>Alarm with interior monitoring, tilt sensor and back up horn</p> <p>Electronic engine immobiliser</p> <p>Electromechanical power steering</p> <p>Driver and front passenger seat belt warning light</p> <p>Tyre repair kit (no spare wheel)</p> <p>Remote central locking (with 2 keys) and SAFE (preventing unlocking from inside)</p> | <p>TECHNOLOGY</p> <p>Bluetooth®</p> <p>DAB digital radio</p> <p>Front assist (including automatic braking function)</p> <p>Maxi-DOT trip computer</p> <p>Stop/Start engine system and energy recovery</p> <p>Swing radio with 5" touchscreen, 2-DIN radio, MP3 player, AUX-IN, USB and SD card</p> | <p>SERVICING & WARRANTY</p> <p>3 years / 60,000 mile warranty</p> <p>Flexible servicing</p> |
| <p>COMFORT & CONVENIENCE</p> <p>3 spoke leather multi-function steering wheel</p> <p>Cloth upholstery</p> <p>Electromechanical parking brake</p> <p>Removable LED lamp in boot</p> <p>Small leather package</p> <p>Aero front windscreen wipers with intermittent function</p> <p>Rear window wiper (Estate only)</p> | | | | |

Note: temporary spare wheel can be ordered as an option.

* Please see page 42 and 43 for further details on VED and OTR.

The ŠKODA Superb SE

| Hatchback | CO ₂ (g/km) | VED Band* | Insurance Group (50) | Recommended Basic | VAT | RRP | Recommended OTR* | Business user information | |
|-----------------------|---------------------------|--------------|-------------------------|----------------------|-----------|------------|---------------------|---------------------------|---------------|
| | | | | | | | | BiK 2015/16 | P11D Value |
| 1.4 TSI 150PS ACT | 115 | C | 18E | £17,187.50 | £3,437.50 | £20,625.00 | £21,190.00 | 18% | £21,135.00 |
| 1.4 TSI 150PS DSG ACT | 117 | C | 18E | £18,354.17 | £3,670.83 | £22,025.00 | £22,590.00 | 18% | £22,535.00 |
| 1.6 TDI 120PS | 108 | B | 13E | £17,520.83 | £3,504.17 | £21,025.00 | £21,590.00 | 19% | £21,535.00 |
| 1.6 TDI 120PS DSG | 105 | B | 13E | £18,687.50 | £3,737.50 | £22,425.00 | £22,990.00 | 19% | £22,935.00 |
| 2.0 TDI 150PS | 108 | B | 18E | £17,937.50 | £3,587.50 | £21,525.00 | £22,090.00 | 19% | £22,035.00 |
| 2.0 TDI 150PS DSG | 118 | C | 18E | £19,104.17 | £3,820.83 | £22,925.00 | £23,490.00 | 21% | £23,435.00 |
| 2.0 TDI 150PS 4x4 SCR | 119 | C | 18E | £19,187.50 | £3,837.50 | £23,025.00 | £23,590.00 | 21% | £23,535.00 |
| Estate | | | | | | | | | |
| 1.4 TSI 150PS ACT | 119 | C | 18E | £18,187.50 | £3,637.50 | £21,825.00 | £22,390.00 | 18% | £22,335.00 |
| 1.4 TSI 150PS DSG ACT | 119 | C | 18E | £19,354.17 | £3,870.83 | £23,225.00 | £23,790.00 | 18% | £23,735.00 |
| 1.6 TDI 120PS | 109 | B | 13E | £18,520.83 | £3,704.17 | £22,225.00 | £22,790.00 | 19% | £22,735.00 |
| 1.6 TDI 120PS DSG | 105 | B | 13E | £19,687.50 | £3,937.50 | £23,625.00 | £24,190.00 | 19% | £24,135.00 |
| 2.0 TDI 150PS | 109 | B | 18E | £18,937.50 | £3,787.50 | £22,725.00 | £23,290.00 | 19% | £23,235.00 |
| 2.0 TDI 150PS DSG | 121 | D | 18E | £20,104.17 | £4,020.83 | £24,125.00 | £24,690.00 | 22% | £24,635.00 |
| 2.0 TDI 150PS 4x4 SCR | 120 | C | 18E | £20,187.50 | £4,037.50 | £24,225.00 | £24,790.00 | 22% | £24,735.00 |

Standard Equipment (over Superb S)

| | | |
|---|--|--|
| <p>DESIGN</p> <p>17" Helios alloy wheels with anti-theft wheel bolts (17" x 7) with 215/55 R17 tyres)</p> <p>Radiator grille frame in chrome design</p> <p>Silver roof rails (Estate only)</p> | <p>SAFETY & SECURITY</p> <p>Cornering front fog lights</p> <p>Driver fatigue sensor</p> | <p>TECHNOLOGY</p> <p>Adaptive cruise control (ACC)</p> <p>Bolero radio with 6.5" touchscreen, 2-DIN radio, MP3 player, AUX-IN, USB and SD card</p> <p>SmartLink</p> <p>Light assistant (including coming home, leaving home and tunnel light)</p> |
| <p>COMFORT & CONVENIENCE</p> <p>Dual zone air conditioning with humidity sensor and control</p> <p>Electrically folding door mirrors</p> <p>Rear parking sensors</p> <p>Two umbrella compartments in driver and front passenger doors, inc. umbrellas</p> <p>Rear centre armrest with cupholders</p> <p>Manual lumbar support</p> <p>Rain sensor</p> | | |

Note: temporary spare wheel can be ordered as an option.

* Please see page 42 and 43 for further details on VED and OTR.

The ŠKODA Superb SE L Executive

| Hatchback | CO ₂ (g/km) | VED Band* | Insurance Group (50) | Recommended Basic | VAT | RRP | Recommended OTR* | Business user information | |
|---------------------------|------------------------|-----------|----------------------|-------------------|-----------|------------|------------------|---------------------------|------------|
| | | | | | | | | BiK 2015/16 | P11D Value |
| 1.4 TSI 150PS ACT | 116 | C | 19E | £19,712.50 | £3,942.50 | £23,655.00 | £24,220.00 | 18% | £24,165.00 |
| 1.4 TSI 150PS DSG ACT | 118 | C | 19E | £20,879.17 | £4,175.83 | £25,055.00 | £25,620.00 | 18% | £25,565.00 |
| 2.0 TSI 220PS DSG | 143 | F | 24E | £21,925.00 | £4,385.00 | £26,310.00 | £27,020.00 | 23% | £26,820.00 |
| 2.0 TSI 280PS 4x4 DSG | 165 | G | 27E | £25,229.17 | £5,045.83 | £30,275.00 | £31,020.00 | 28% | £30,785.00 |
| 2.0 TDI 150PS | 109 | B | 19E | £20,462.50 | £4,092.50 | £24,555.00 | £25,120.00 | 19% | £25,065.00 |
| 2.0 TDI 150PS DSG | 119 | C | 19E | £21,629.17 | £4,325.83 | £25,955.00 | £26,520.00 | 21% | £26,465.00 |
| 2.0 TDI 150PS 4x4 SCR | 120 | C | 18E | £21,712.50 | £4,342.50 | £26,055.00 | £26,620.00 | 22% | £26,565.00 |
| 2.0 TDI 190PS SCR | 107 | B | 24E | £22,295.83 | £4,459.17 | £26,755.00 | £27,320.00 | 19% | £27,265.00 |
| 2.0 TDI 190PS DSG SCR | 119 | C | 24E | £23,462.50 | £4,692.50 | £28,155.00 | £28,720.00 | 21% | £28,665.00 |
| 2.0 TDI 190PS 4x4 DSG SCR | 132 | E | 23E | £24,604.17 | £4,920.83 | £29,525.00 | £30,220.00 | 24% | £30,035.00 |

| Estate | | | | | | | | | |
|---------------------------|-----|---|-----|------------|-----------|------------|------------|-------------|------------|
| | | | | | | | | BiK 2015/16 | P11D Value |
| 1.4 TSI 150PS ACT | 120 | C | 19E | £20,712.50 | £4,142.50 | £24,855.00 | £25,420.00 | 19% | £25,365.00 |
| 1.4 TSI 150PS DSG ACT | 120 | C | 19E | £21,879.17 | £4,375.83 | £26,255.00 | £26,820.00 | 19% | £26,765.00 |
| 2.0 TSI 220PS DSG | 146 | F | 24E | £22,925.00 | £4,585.00 | £27,510.00 | £28,220.00 | 24% | £28,020.00 |
| 2.0 TSI 280PS 4x4 DSG | 168 | H | 27E | £26,216.67 | £5,243.33 | £31,460.00 | £32,320.00 | 28% | £31,970.00 |
| 2.0 TDI 150PS | 110 | B | 19E | £21,462.50 | £4,292.50 | £25,755.00 | £26,320.00 | 20% | £26,265.00 |
| 2.0 TDI 150PS DSG | 122 | D | 19E | £22,629.17 | £4,525.83 | £27,155.00 | £27,720.00 | 22% | £27,665.00 |
| 2.0 TDI 150PS 4x4 SCR | 123 | D | 18E | £22,712.50 | £4,542.50 | £27,255.00 | £27,820.00 | 22% | £27,765.00 |
| 2.0 TDI 190PS SCR | 110 | B | 24E | £23,295.83 | £4,659.17 | £27,955.00 | £28,520.00 | 20% | £28,465.00 |
| 2.0 TDI 190PS DSG SCR | 120 | C | 24E | £24,462.50 | £4,892.50 | £29,355.00 | £29,920.00 | 22% | £29,865.00 |
| 2.0 TDI 190PS 4x4 DSG SCR | 135 | E | 23E | £25,604.17 | £5,120.83 | £30,725.00 | £31,420.00 | 25% | £31,235.00 |

Standard Equipment (over SE)

DESIGN

18" Zenith alloy wheels with anti-theft wheel bolts (18" x 8J with 235/45 R18 tyres)

Bi-Xenon headlights with AFS (adaptive front light system) and LED daytime running lights

Headlight washers

Sunset glass

Electrically adjustable, heated and folding door mirrors with memory function

Auto-dimming rear view mirror

TECHNOLOGY

Columbus satellite navigation system with 8" touchscreen, 2-DIN radio, MP3 player, AUX-IN, USB and SD card x2

Drive mode selection

COMFORT & CONVENIENCE

Boot net programme

Electrically operated boot

Electrically adjustable driver's seat with memory and lumbar support

Leather upholstery and heated front seats

Note: temporary spare wheel can be ordered as an option.

* Please see page 42 and 43 for further details on VED and OTR.

The ŠKODA Superb Laurin & Klement

| Hatchback | CO ₂ (g/km) | VED Band* | Insurance Group (50) | Recommended Basic | VAT | RRP | Recommended OTR* | Business user information | |
|---------------------------|------------------------|-----------|----------------------|-------------------|-----------|------------|------------------|---------------------------|------------|
| | | | | | | | | BiK 2015/16 | P11D Value |
| 2.0 TSI 220PS DSG | 143 | F | 25E | £24,941.67 | £4,988.33 | £29,930.00 | £30,640.00 | 23% | £30,440.00 |
| 2.0 TSI 280PS 4x4 DSG | 165 | G | 28E | £28,329.17 | £5,665.83 | £33,995.00 | £34,740.00 | 28% | £34,505.00 |
| 2.0 TDI 150PS | 109 | B | 20E | £23,479.17 | £4,695.83 | £28,175.00 | £28,740.00 | 19% | £28,685.00 |
| 2.0 TDI 150PS DSG | 119 | C | 20E | £24,645.83 | £4,929.17 | £29,575.00 | £30,140.00 | 21% | £30,085.00 |
| 2.0 TDI 150PS 4x4 SCR | 120 | C | 19E | £24,729.17 | £4,945.83 | £29,675.00 | £30,240.00 | 22% | £30,185.00 |
| 2.0 TDI 190PS SCR | 107 | B | 25E | £25,312.50 | £5,062.50 | £30,375.00 | £30,940.00 | 19% | £30,885.00 |
| 2.0 TDI 190PS DSG SCR | 119 | C | 25E | £26,479.17 | £5,295.83 | £31,775.00 | £32,340.00 | 21% | £32,285.00 |
| 2.0 TDI 190PS 4x4 DSG SCR | 132 | E | 24E | £27,620.83 | £5,524.17 | £33,145.00 | £33,840.00 | 24% | £33,655.00 |

| Estate | | | | | | | | | |
|---------------------------|-----|---|-----|------------|-----------|------------|------------|-------------|------------|
| | | | | | | | | BiK 2015/16 | P11D Value |
| 2.0 TSI 220PS DSG | 146 | F | 25E | £25,941.67 | £5,188.33 | £31,130.00 | £31,840.00 | 24% | £31,640.00 |
| 2.0 TSI 280PS 4x4 DSG | 168 | H | 28E | £29,233.33 | £5,846.67 | £35,080.00 | £35,940.00 | 28% | £35,590.00 |
| 2.0 TDI 150PS | 110 | B | 20E | £24,479.17 | £4,895.83 | £29,375.00 | £29,940.00 | 20% | £29,885.00 |
| 2.0 TDI 150PS DSG | 122 | D | 20E | £25,645.83 | £5,129.17 | £30,775.00 | £31,340.00 | 22% | £31,285.00 |
| 2.0 TDI 150PS 4x4 SCR | 123 | D | 19E | £25,729.17 | £5,145.83 | £30,875.00 | £31,440.00 | 22% | £31,385.00 |
| 2.0 TDI 190PS SCR | 110 | B | 25E | £26,312.50 | £5,262.50 | £31,575.00 | £32,140.00 | 20% | £32,085.00 |
| 2.0 TDI 190PS DSG SCR | 120 | C | 25E | £27,479.17 | £5,495.83 | £32,975.00 | £33,540.00 | 22% | £33,485.00 |
| 2.0 TDI 190PS 4x4 DSG SCR | 135 | E | 24E | £28,620.83 | £5,724.17 | £34,345.00 | £35,040.00 | 25% | £34,855.00 |

Standard Equipment (over SE L Executive)

DESIGN

18" Pegasus anthracite alloy wheels with anti-theft wheel bolts (18" x 8J with 235/45 R18 tyres)

LED exterior light package (LED rear tail lights high, registration plate illumination and boarding spots)

COMFORT & CONVENIENCE

CANTON sound system (10 loudspeakers, central speaker, subwoofer and digital equaliser)

Boot net programme

Floor mats

Electrically adjustable driver and front passenger seats with memory and lumbar support

Piano black decorative inserts

Tri-zone climate control

Heated windscreen

Heated front and rear seats

LED interior light package (LED ambient lighting in 3 colours, front and rear reading lights, footwell lighting, door handle illumination and vanity mirror lighting)

TECHNOLOGY

Dynamic chassis control (DCC)

Blind spot detection

Colour Maxi-DOT

KESSY

Lane assist

Park assist

TV tuner

Virtual pedal

Note: temporary spare wheel can be ordered as an option.

* Please see page 42 and 43 for further details on VED and OTR.



Factory Fitted Optional Equipment

| Options | S | SE | SE L | L&K | Basic | RRP |
|---|---|----|------|-----|---------|---------|
| Wheels and suspension | | | | | | |
| 17" Helios alloy wheels <i>with anti-theft wheel bolts and Super ROWI tyres Only available on 1.4 TSI and 1.6 TDI</i> | - | ○ | - | - | £62.50 | £75.00 |
| | - | - | ○ | - | FOC | FOC |
| 17" Stratos alloy wheels <i>with anti-theft wheel bolts</i> | - | ○ | - | - | FOC | FOC |
| 17" Stratos alloy wheels <i>with anti-theft wheel bolts and Super ROWI tyres Only available on 1.4 TSI and 1.6 TDI</i> | - | ○ | - | - | £62.50 | £75.00 |
| | - | - | ○ | - | FOC | FOC |
| 17" Zeus alloy wheels <i>with anti-theft wheel bolts</i> | - | ○ | - | - | FOC | FOC |
| 18" Zenith alloy wheels <i>with anti-theft wheel bolts</i> | - | ○ | - | - | £375.00 | £450.00 |
| 18" Modus alloy wheels <i>with anti-theft wheel bolts</i> | - | ○ | - | - | £375.00 | £450.00 |
| | - | - | ○ | ○ | FOC | FOC |
| 18" Pegasus alloy wheels <i>with anti-theft wheel bolts</i> | - | ○ | - | - | £375.00 | £450.00 |
| | - | - | ○ | - | FOC | FOC |
| 19" Phoenix alloy wheels <i>with anti-theft wheel bolts</i> | - | - | ○ | - | £541.67 | £650.00 |
| 19" Sirius alloy wheels <i>with anti-theft wheel bolts</i> | - | - | ○ | - | £541.67 | £650.00 |
| 19" Phoenix anthracite alloy wheels <i>with anti-theft wheel bolts</i> | - | - | - | ○ | £541.67 | £650.00 |
| Temporary space-saver spare wheel | ○ | ○ | ○ | ○ | £83.33 | £100.00 |
| Drive mode selection <i>Allows the driver to adapt the car's behaviour to their preference or needs. Four driving modes are available; normal, sport, eco and individual (which allows the driver to configure customised settings)</i> | - | ○ | ● | - | £83.33 | £100.00 |
| Dynamic chassis control (DCC) <i>Allows the driver to adapt the chassis properties to their preference or needs. The system continuously evaluates and responds to various driving situations, adapting the damping and steering characteristics. The available modes for DCC are normal, comfort and sport. Also includes drive mode selection</i> | - | ○ | ○ | ● | £625.00 | £750.00 |

| Paint | | | | | | |
|-----------------------------------|---|---|---|---|---------|---------|
| Solid colour | ○ | ○ | ○ | ○ | FOC | FOC |
| Special colours | ○ | ○ | ○ | ○ | £145.83 | £175.00 |
| Metallic and pearl effect colours | ○ | ○ | ○ | ○ | £445.83 | £535.00 |

| Exterior | | | | | | |
|---|---|---|---|---|-----------|-----------|
| Bi-Xenon headlights, AFS and LED daytime running lights with integrated headlight washers | - | ○ | ● | ● | £1,079.17 | £1,295.00 |
| Rough road package <i>Includes engine guard and underbody stone guard. Ride height is increased by 15mm. Only available in combination with 16" or 17" alloy wheels</i> | ○ | ○ | - | - | £166.67 | £200.00 |
| Sunset glass | - | ○ | ● | ● | £208.33 | £250.00 |
| Hatch only | | | | | | |
| Rear-window wiper | ○ | ○ | ○ | ○ | FOC | FOC |

- Not available ○ Option ● Standard ROWI = low rolling resistance tyre

* Spare wheels are restricted to 50mph ** Standard on DSG models * Not available in combination with Colour Concept

| Options | S | SE | SE L | L&K | Basic | RRP |
|--|---|----|------|-----|-----------|-----------|
| Interior | | | | | | |
| 3 spoke leather multifunction steering wheel with DSG paddles <i>Only available in combination with DSG transmission</i> | ○ | ○ | ○ | ○ | £79.17 | £95.00 |
| Alcantara/leather upholstery* | - | ○ | - | - | £958.33 | £1,150.00 |
| Leather upholstery* | - | ○ | ● | ● | £1,125.00 | £1,350.00 |
| Lumbar support for driver and front passenger | ○ | - | - | - | £104.17 | £125.00 |
| Electrically adjustable front seats <i>Includes lumbar support and auto dimming door mirrors with memory function</i> | - | ○ | - | - | £833.33 | £1,000.00 |
| | - | - | ○ | ● | £458.33 | £550.00 |
| Front passenger seat adjustment from rear <i>Allows rear passengers to control the adjustment of the front passenger seat. Only available in combination with electrically adjustable front seats</i> | - | ○ | ○ | ○ | £62.50 | £75.00 |
| Heated front seats | - | ○ | ● | ● | £208.33 | £250.00 |
| Heated front and rear seats | - | ○ | - | - | £333.33 | £400.00 |
| | - | - | ○ | ● | £166.67 | £200.00 |
| Ventilated front seats <i>Only available in combination with electrically adjustable front seats</i> | - | - | ○ | - | £520.83 | £625.00 |
| | - | - | - | ○ | £354.17 | £425.00 |
| Dark aluminium look inserts | - | ○ | - | - | £83.33 | £100.00 |
| LED package plus <i>Includes LED front reading lights, door handle illumination, footwell illumination in front and rear and illuminated vanity mirrors. Also includes decorative ambient lighting strips on the dashboard and front and rear doors which can be set in three colours: warm amber, green or blue</i> | - | - | ○ | ● | £162.50 | £195.00 |
| Fold flat front passenger seat | ○ | ○ | - | - | £83.33 | £100.00 |
| Rear backrest release from boot | ○ | ○ | ○ | ○ | £75.00 | £90.00 |
| Sunblinds for rear side windows | - | ○ | ○ | ○ | £145.83 | £175.00 |
| Sunblinds for rear window and rear side windows | - | ○ | ○ | ○ | £208.33 | £250.00 |
| Textile floor mat set | ○ | ○ | ○ | ● | £66.67 | £80.00 |
| Boot net programme | ○ | ○ | ○ | ○ | £45.83 | £55.00 |
| Smoker's package <i>Front ashtray and lighter</i> | ○ | ○ | ○ | ○ | £25.00 | £30.00 |
| Waste bin in door panel | ○ | ○ | ○ | ○ | £16.67 | £20.00 |
| Hatch only | | | | | | |
| Sunroof | - | ○ | ○ | ○ | £708.33 | £850.00 |
| Estate only | | | | | | |
| Panoramic sunroof | - | ○ | ○ | ○ | £958.33 | £1,150.00 |
| Variable boot floor <i>Not available in combination with space saver spare wheel</i> | ○ | ○ | ○ | ○ | £125.00 | £150.00 |
| Partition net screen | ○ | ○ | ○ | ○ | £125.00 | £150.00 |
| Retractable parcel shelf <i>Automatically retracts when the boot opens</i> | - | ○ | ○ | ○ | £100.00 | £120.00 |

* May contain some artificial leather

Factory Fitted Optional Equipment (continued)

| Options | S | SE | SE L | L&K | Basic | RRP |
|---|---|----|------|-----|-----------|-----------|
| Safety and Security | | | | | | |
| Hill-hold control Standard with DSG transmission | ○ | ○ | ○ | ○ | £83.33 | £100.00 |
| ISOFIX on front passenger seat | ○ | ○ | ○ | ○ | £37.50 | £45.00 |
| Crew protection assist and rear side airbags <i>Senses when an impact is imminent and closes windows and sunroof to protect the passengers from objects entering the car as well as tightening the seatbelts ensuring occupants are in the safest possible position</i> | ○ | ○ | ○ | ○ | £362.50 | £435.00 |
| Entertainment and Communication | | | | | | |
| Amundsen touchscreen satellite navigation system <i>SD card-based navigation with 6.5" colour TFT touchscreen</i> | - | ○ | - | - | £629.17 | £755.00 |
| Columbus touchscreen satellite navigation system with integrated Wi-Fi <i>HDD-based navigation with 8" colour TFT touchscreen, DVD drive and an internal SIM card slot</i> | - | ○ | ● | ● | £1,333.33 | £1,600.00 |
| Bluetooth®+ with Phone box <i>By placing a mobile phone in the tray in front of the gearshift lever the strength of phone signal can be improved by up to 20%. This provides better sound quality during phone calls and helps to improve phone battery life</i> | - | ○ | ○ | ○ | £208.33 | £250.00 |
| Premium WLAN with integrated high-speed LTE internet † <i>Includes SIM card slot and rSAP profile compatibility to provide high-speed LTE internet. Only available in combination with Columbus satellite navigation system</i> | - | ○ | ○ | ○ | £291.67 | £350.00 |
| Media Command <i>Allows wireless control of selected functions of the Columbus satellite navigation system using a mobile device via a wireless Wi-Fi technology. It is possible to access the following functions: media, navigation, radio and audio settings. The Media Command application is available from app stores</i> | - | ○ | ○ | ○ | £70.83 | £85.00 |
| CANTON sound system <i>Tailor-made for the Superb, this sound system delivers a total output of 610W and features a 10 channel digital amplifier and 12 speakers: 6 front, 4 rear, 1 in the dashboard and a 200W subwoofer in the boot. Includes 12 pre-set sound profiles, vehicle noise cancellation and 3D surround sound. Delivers Dolby 5.1 surround sound when combined with Columbus satellite navigation system</i> | - | ○ | ○ | ● | £500.00 | £600.00 |
| SmartGate <i>Uses Wi-Fi connection to send selected vehicle data to a connected device. Special mobile apps are available which allow you to analyse driving data and performance to find out more about your driving style. Examples of data available include vehicle speed, engine revs and g-meter. The SmartGate applications are available free of charge from app stores</i> | - | ○ | ○ | ○ | £83.33 | £100.00 |
| TV Tuner <i>Displays DVB, DAB and DMB-DTV broadcast formats whilst the vehicle is stationary. Only available in combination with Columbus satellite navigation system</i> | - | ○ | ○ | ● | £708.33 | £850.00 |
| Colour Maxi DOT trip computer | - | ○ | ○ | ● | £70.83 | £85.00 |

| Driver Assistance | | | | | | |
|--|---|---|---|---|---------|---------|
| Rear parking sensors | ○ | ● | ● | - | £291.67 | £350.00 |
| Front and rear parking sensors | - | ○ | ○ | ● | £291.67 | £350.00 |
| Rear-view parking camera | - | ○ | ○ | ○ | £250.00 | £300.00 |
| Park assist <i>Parks the car in parallel or bay spaces. Includes front and rear parking sensors</i> | - | ○ | ○ | ● | £491.67 | £590.00 |
| Lane assist and Blind spot detection <i>Lane assist is a camera-based function which is designed to keep the vehicle within its lane and, if necessary, alert the driver of an unwanted lane change. Blind spot detection uses a radar to prevent the driver from failing to notice a car in the blind spot behind or beside the car and, if necessary, provide a warning signal to the driver in the outer corner of the wing mirrors. Only available in combination with electrically adjustable front seats</i> | - | ○ | ○ | ● | £708.33 | £850.00 |
| Light assist with high beam control <i>Assesses the light conditions and traffic situation and automatically switches on and off the high beams. Only available in combination with Bi-Xenon headlights</i> | - | ○ | ○ | - | £208.33 | £250.00 |
| Smart light assist <i>Uses the multifunction camera to detect when to switch between low and high beams automatically and prevents other drivers from being blinded by the vehicles lights. Also adds further decorative illuminated LED strips to the headlights for a more distinctive look. Includes Lane assist and Blind spot detection. Only available in combination with electrically adjustable front seats and Bi-Xenon headlights</i> | - | ○ | ○ | - | £791.67 | £950.00 |
| | - | - | - | ○ | £83.33 | £100.00 |
| Travel assist with traffic sign recognition and display <i>Uses the multifunction camera to recognise and display traffic signs on the Maxi DOT and navigation displays. Only available in combination with a satellite navigation system</i> | - | ○ | ○ | ○ | £70.83 | £85.00 |
| Cruise control with speed limiter | ○ | - | - | - | £166.67 | £200.00 |

Factory Fitted Optional Equipment (continued)

| Options | S | SE | SE L | L&K | Basic | RRP |
|--|---|----|------|-----|---------|---------|
| Driver Assistance | | | | | | |
| Tri-zone climate control <i>Allows three autonomous thermal comfort zones to be set: driver, front passenger and rear passenger. Temperature range available is 16 - 29.5 °C and the rear temperature setting can be deactivated in the infotainment system when not in use</i> | - | ○ | ○ | ● | £250.00 | £300.00 |
| Heated windscreen washer nozzles | - | ○ | ○ | ○ | £41.67 | £50.00 |
| Heated windscreen <i>Designed to quickly defrost or demist the windscreen. A thin metal-coated layer is used throughout the glass area and heats whilst the engine is running. This also reflects heat when warm outside to help keep the interior cool</i> | - | ○ | ○ | ● | £250.00 | £300.00 |
| KESSY - Keyless entry and start system <i>Allows the car to be locked, unlocked and started with a button as long as the sensors detect the key is with the driver</i> | - | ○ | ○ | ● | £333.33 | £400.00 |
| Electrically operated boot <i>Enables the boot to open and close at the touch of a button; via the key, central panel or boot handle. The top position of the boot lid can also be adjusted to suit individual preferences</i> | - | ○ | ● | ● | £333.33 | £400.00 |
| Virtual pedal <i>Enables touch-free boot opening via a motion sensor under the rear bumper. If the system identifies the authorised key and detects the 'kick' motion, the boot will open. Includes electrically operated boot functionality. Only available in combination with KESSY</i> | - | ○ | - | ● | £458.33 | £550.00 |
| | - | - | ○ | - | £125.00 | £150.00 |
| Swivelling tow bar <i>The tow bar can be easily released from the boot and folded away after use. Includes preparation of the following vehicle systems for optimised operation whilst towing: alternator, battery, fan and cooling system</i> | ○ | ○ | ○ | ○ | £637.50 | £765.00 |

| Service and Warranty | | | | | | |
|---|---|---|---|---|---------|---------|
| Extended warranty <i>Total 4 years or 80,000 miles</i> | ○ | ○ | ○ | ○ | £250.00 | £300.00 |
| Extended warranty <i>Total 5 years or 100,000 miles</i> | ○ | ○ | ○ | ○ | £525.00 | £630.00 |
| Service Plan <i>Total 3 years or 30,000 miles</i> | ○ | ○ | ○ | ○ | £399.17 | £479.00 |

† High-speed LTE internet is activated by inserting a SIM card into the slot in the glovebox, or connecting a smartphone via the rSAP profile. Passengers can then connect to the Superb's Wi-Fi hotspot and browse the internet wirelessly on their individual devices. An external data source is required to enable the Wi-Fi hotspot services. Only available for mobile phone or SIM card contracts which include a data option with the use of LTE, if LTE usage is required. Usage will only be available within the coverage of the mobile phone network; there may be additional costs for the use of these services (charges and billing correspond to the mobile phone or SIM card contract). Due to potentially high data volumes, a contract including an unlimited or high usage data plan is strongly recommended.

The ŠKODA Superb trims & wheels

Superb S

Standard

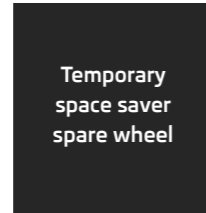


16" Orion alloys



Black cloth upholstery

Available on all models



See page 30 for details

Superb SE

Standard



17" Helios alloys



Black cloth upholstery



Grey cloth upholstery



17" Stratos alloys



17" Zeus alloys



18" Zenith alloys



18" Modus alloys



18" Pegasus alloys

Superb SE (Continued)

Option



Black alcantara/leather upholstery



Black leather upholstery

The ŠKODA Superb trims & wheels

Superb SE L Executive

Standard



18" Zenith alloys



Black leather upholstery



Beige leather upholstery

Option



17" Helios alloys



17" Stratos alloys



18" Modus alloys



18" Pegasus alloys



19" Phoenix alloys

Superb SE L Executive (Continued)

Option



19" Sirius alloys



Black ventilated leather upholstery



Beige ventilated leather upholstery

Please note: CO₂ emissions can change if a different size alloy wheel is ordered. This may also lead to a change in the VED and BiK tax amount payable. Please refer to pages 42 and 43 for more details.

Laurin & Klement

Standard



18" Pegasus anthracite alloys



Brown leather upholstery



Beige leather upholstery

Option



19" Phoenix anthracite alloys



18" Pegasus alloys



Black ventilated leather upholstery



Beige ventilated leather upholstery

The ŠKODA Superb colours

Solid colour



Pacific Blue

Special colours



Candy White



Corrida Red

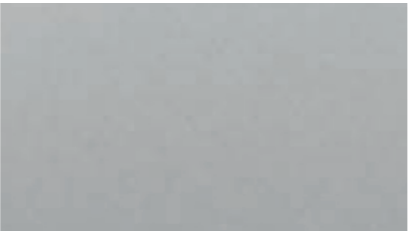
Metallic and pearl effect colours



Black Magic pearl effect



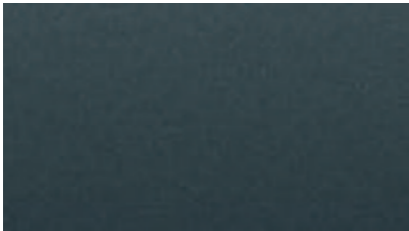
Petrol Blue metallic



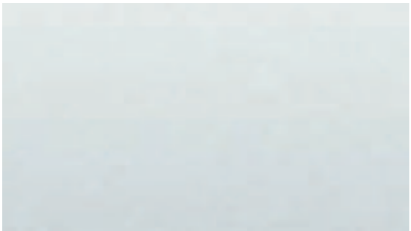
Brilliant Silver metallic



Cappuccino Beige metallic



Quartz Grey metallic



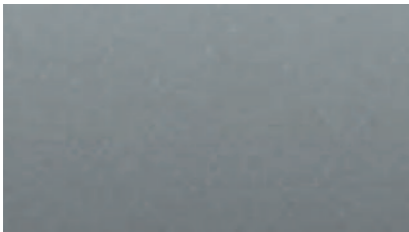
Moon White metallic



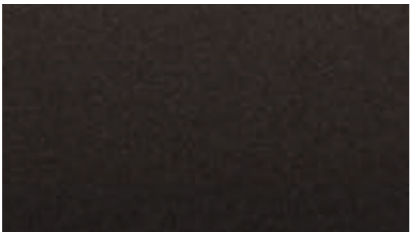
Rosso Brunello metallic



Jungle Green metallic



Business Grey metallic (new)



Magnetic Brown metallic

Because of errors which may occur in the print, the colours illustrated here may differ from the actual finishes themselves. Your ŠKODA retailer will be pleased to advise you.





The ŠKODA Superb Engine Specifications

| Petrol engines | 1.4 TSI 125PS | 1.4 TSI 150PS ACT | 1.4 TSI 150PS DSG ACT | 2.0 TSI 220PS DSG | 2.0 TSI 280PS 4x4 DSG |
|--------------------------|---------------------------|---------------------------|---------------------------|---------------------------|---------------------------|
| Trim level | S | SE/SE L Executive | SE/SE L Executive | SE L Executive/L&K | SE L Executive/L&K |
| Engine type | 4-cylinder in-line engine | 4-cylinder in-line engine | 4-cylinder in-line engine | 4-cylinder in-line engine | 4-cylinder in-line engine |
| Gearbox type | Manual | Manual | Automatic | Automatic | Automatic |
| Transverse-mounted | Yes | Yes | Yes | Yes | Yes |
| Fuel injection type | Direct fuel injection | Direct fuel injection | Direct fuel injection | Direct fuel injection | Direct fuel injection |
| Cubic capacity cc | 1,395 | 1,395 | 1,395 | 1,984 | 1,984 |
| Bore x stroke mm | 74.5 x 80 | 74.5 x 80 | 74.5 x 80 | 82.5 x 92.8 | 82.5 x 92.8 |
| Air pollution regulation | EU6 | EU6 | EU6 | EU6 | EU6 |
| Compression ratio | 10.5:1 | 10.5:1 | 10.5:1 | 9.6:1 | 9.3:1 |

Performance Hatchback

| | | | | | |
|---------------------------|-----------------|-----------------|-----------------|-----------------|-----------------|
| Max speed mph (km/h) | 129 (208)☐ | 137 (220)☐ | 137 (220)☐ | 152 (245)☐ | 155 (250)☐ |
| Acceleration 0-62mph | 9.9 | 8.6 | 8.8 | 7 | 5.8 |
| Max. performance (PS/rpm) | 125/5,000-6,000 | 150/5,000-6,000 | 150/5,000-6,000 | 220/4,500-6,200 | 280/5,600-6,500 |
| Max. torque (Nm/rpm) | 200/1,400-4,000 | 250/1,500-3,500 | 250/1,500-3,500 | 350/1,500-4,400 | 350/1,700-5,600 |

Performance Estate

| | | | | | |
|---------------------------|-----------------|-----------------|-----------------|-----------------|-----------------|
| Max speed mph (km/h) | 128 (206)☐ | 135 (218)☐ | 135 (218)☐ | 151 (243)☐ | 155 (250)☐ |
| Acceleration 0-62mph | 10 | 8.7 | 8.9 | 7.1 | 5.8 |
| Max. performance (PS/rpm) | 125/5,000-6,000 | 150/5,000-6,000 | 150/5,000-6,000 | 220/4,500-6,200 | 280/5,600-6,500 |
| Max. torque (Nm/rpm) | 200/1,400-4,000 | 250/1,500-3,500 | 250/1,500-3,500 | 350/1,500-4,400 | 350/1,700-5,600 |

☐ Where law permits.

Power transmission

Clutch Hydraulically-activated single-plate dry clutch with diaphragm spring, asbestos-free coating.

Manual transmission Fully synchronised with direct gearshift, six speed manual transmission.

6 spd DSG transmission - Two coaxial wet multiple-disc clutch, electro-hydraulically operated.

7 spd DSG transmission - Two coaxial dry multiple-disc clutch, electro-hydraulically operated.

Please note: With all manual gear boxes the clutch needs to be depressed to start the engine.

Number of gears

6 speed manual. 1.4 TSI 125PS, 1.4 TSI 150PS ACT, 1.6 TDI 120PS, 2.0 TDI 150PS, 2.0 TDI 150PS 4x4, 2.0 TDI 190PS

6 speed DSG. 2.0 TSI 220PS, 2.0 TSI 280PS 4x4, 2.0 TDI 150PS, 2.0 TDI 190PS, 2.0 TDI 190PS 4x4

7 speed DSG. 1.4 TSI 150PS ACT, 1.6 TDI 120PS

Chassis

Front axle MacPherson suspension with lower triangular links and torsion stabiliser.

Rear axle

Multi-element axle, with one longitudinal and three transverse links, with torsion stabiliser.

Suspension Telescopic shock absorbers with coil springs, in the rear outside the springs.

Braking system

Hydraulic dual-diagonal circuit braking system vacuum assisted with Dual Rate system.

Front brakes Disc brakes with inner cooling, with single/piston floating caliper.

Rear brakes Disc brakes.

Handbrake Electromechanical.

Steering

Direct rack and pinion steering with electromechanical power steering.

Turning circle of wheels (m) 11,1

The ŠKODA Superb Engine Specifications

| Diesel engines | 1.6 TDI 120PS | 1.6 TDI 120PS DSG | 2.0 TDI 150PS | 2.0 TDI 150PS DSG | 2.0 TDI 150PS 4x4 | 2.0 TDI 190PS | 2.0 TDI 190PS DSG | 2.0 TDI 190PS | 2.0 TDI 190PS 4x4 DSG |
|--------------------------|--|--|--|--|--|--|--|--|--|
| Trim level | S/SE/SE Business | S/SE/SE Business | SE/SE Business/SE L Executive/L&K | SE/SE Business/SE L Executive/L&K | SE/SE L Executive/L&K | SE L Executive/L&K | SE L Executive/L&K | SE L Executive/L&K | SE L Executive/L&K |
| Engine type | 4-cylinder in-line engine | 4-cylinder in-line engine | 4-cylinder in-line engine | 4-cylinder in-line engine | 4-cylinder in-line engine | 4-cylinder in-line engine | 4-cylinder in-line engine | 4-cylinder in-line engine | 4-cylinder in-line engine |
| Gearbox type | Manual | Automatic | Manual | Automatic | Manual | Manual | Automatic | Automatic | Automatic |
| Transverse-mounted | Yes | Yes | Yes | Yes | Yes | Yes | Yes | Yes | Yes |
| Fuel injection type | High pressure direct fuel injection system | High pressure direct fuel injection system | High pressure direct fuel injection system | High pressure direct fuel injection system | High pressure direct fuel injection system | High pressure direct fuel injection system | High pressure direct fuel injection system | High pressure direct fuel injection system | High pressure direct fuel injection system |
| Cubic capacity cc | 1,598 | 1,589 | 1,968 | 1,968 | 1,968 | 1,968 | 1,968 | 1,968 | 1,968 |
| Bore x stroke mm | 79.5 x 80.5 | 79.5 x 80.5 | 81 x 95.5 | 81 x 95.5 | 81 x 95.5 | 81 x 95.5 | 81 x 95.5 | 81 x 95.5 | 81 x 95.5 |
| Air pollution regulation | EU6 | EU6 | EU6 | EU6 | EU6 | EU6 | EU6 | EU6 | EU6 |
| Compression ratio | 16.2:1 | 16.2:1 | 16.2:1 | 16.2:1 | 16.2:1 | 15.8:1 | 15.8:1 | 15.8:1 | 15.8:1 |

Performance Hatchback

| | | | | | | | | |
|---------------------------|-----------------|-----------------|-----------------|-----------------|-----------------|-----------------|-----------------|-----------------|
| Max speed mph (km/h) | 128 (206)☐ | 128 (206)☐ | 137 (220)☐ | 135 (218)☐ | 134 (215)☐ | 147 (237)☐ | 146 (235)☐ | 143 (230)☐ |
| Acceleration 0-62mph | 9.9 | 8.6 | 8.8 | 8.6 | 9 | 8 | 7.7 | 7.6 |
| Max. performance (PS/rpm) | 120/3,500-4,000 | 120/3,500-4,000 | 150/3,500-4,000 | 150/3,500-4,000 | 150/3,500-4,000 | 190/3,500-4,000 | 190/3,500-4,000 | 190/3,500-4,000 |
| Max. torque (Nm/rpm) | 250/1,500-3,250 | 250/1,500-3,250 | 340/1,750-3,000 | 340/1,750-3,000 | 340/1,750-3,000 | 400/1,750-3,250 | 400/1,750-3,250 | 400/1,750-3,250 |

Performance Estate

| | | | | | | | | |
|---------------------------|-----------------|-----------------|-----------------|-----------------|-----------------|-----------------|-----------------|-----------------|
| Max speed mph (km/h) | 127 (204)☐ | 127 (204)☐ | 135 (218)☐ | 134 (216)☐ | 132 (213)☐ | 146 (235)☐ | 145 (233)☐ | 142 (228)☐ |
| Acceleration 0-62mph | 11 | 11.1 | 8.9 | 9 | 9.1 | 8.1 | 7.8 | 7.7 |
| Max. performance (PS/rpm) | 120/3,500-4,000 | 120/3,500-4,000 | 150/3,500-4,000 | 150/3,500-4,000 | 150/3,500-4,000 | 190/3,500-4,000 | 190/3,500-4,000 | 190/3,500-4,000 |
| Max. torque (Nm/rpm) | 250/1,500-3,250 | 250/1,500-3,250 | 340/1,750-3,000 | 340/1,750-3,000 | 340/1,750-3,000 | 400/1,750-3,250 | 400/1,750-3,250 | 400/1,750-3,250 |

☐ Where law permits.

Tank

Fuel tank content (litres) 66

Fuel Unleaded petrol min. RON 95 or Unleaded petrol min. RON 91 Diesel CZ 51. No biodiesel. †

Body type 5 door, two compartment, 5 seater.

Drag coefficient

| | | |
|-----------------------|-------|-------|
| 1.4 TSI 125PS | 0.279 | 0.289 |
| 1.4 TSI 150PS ACT | 0.282 | 0.291 |
| 1.4 TSI 150PS DSG ACT | 0.282 | 0.291 |
| 2.0 TSI 220PS DSG | 0.308 | 0.310 |
| 2.0 TSI 280PS 4x4 DSG | 0.309 | 0.317 |
| 1.6 TDI 120PS | 0.275 | 0.285 |
| 1.6 TDI 120PS DSG | 0.275 | 0.285 |
| 2.0 TDI 150PS | 0.276 | 0.285 |
| 2.0 TDI 150PS DSG | 0.276 | 0.285 |
| 2.0 TDI 150PS 4x4 | 0.283 | 0.292 |
| 2.0 TDI 190PS | 0.295 | 0.304 |
| 2.0 TDI 190PS DSG | 0.295 | 0.304 |
| 2.0 TDI 190PS 4x4 DSG | 0.299 | 0.308 |

Hatch Estate

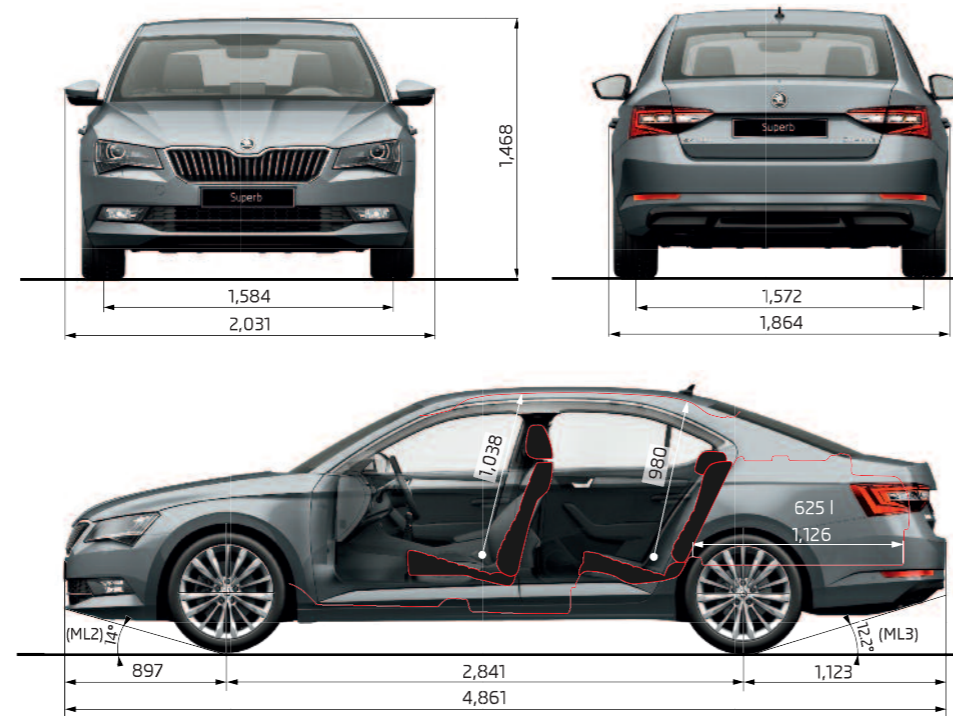
†Using low-octane fuel may affect engine performance.

We measure the maximum power output figures of our engines in PS or Pferdestärke (horse strength in German), which is the metric equivalent of bhp. To convert from metric to imperial horsepower, divide the PS figure by 1.0139.

Measurements and Weights

The ŠKODA Superb Hatchback

| Interior dimensions (mm) | Standard |
|---|----------|
| Width of front seats | 1,507 |
| Width of rear seats | 1,520 |
| Headroom in front seats | 991 |
| Headroom in rear seats | 980 |
| Exterior dimensions (mm) | Standard |
| Length | 4,861 |
| Width | 1,864 |
| Wheel base | 2,841 |
| Height of the loading sill (at kerb weight*) | 711 |
| Track front | 1,584 |
| Track rear | 1,572 |
| Luggage storage space (litres) | |
| With rear seat upright | 625 |
| With rear seat down | 1,760 |
| (With spare wheel, luggage space is reduced by 20 litres) | |
| Suspension variants (mm) | Standard |
| Height (at kerb weight*) | 1,468 |
| Clearance (at kerb weight*) | 149 |



Measurements and Weights

The ŠKODA Superb Estate

| Interior dimensions (mm) | Standard |
|---|----------|
| Width of front seats | 1,507 |
| Width of rear seats | 1,520 |
| Headroom in front seats | 995 |
| Headroom in rear seats | 1,001 |
| Exterior dimensions (mm) | Standard |
| Length | 4,856 |
| Width | 1,864 |
| Wheel base | 2,841 |
| Height of the loading sill (at kerb weight*) | 620 |
| Track front | 1,584 |
| Track rear | 1,572 |
| Luggage storage space (litres) | |
| With rear seat upright | 660 |
| With rear seat down | 1,950 |
| (With spare wheel, luggage space is reduced by 20 litres) | |
| Suspension variants (mm) | Standard |
| Height (at kerb weight*) | 1,477 |
| Clearance (at kerb weight*) | 149 |



| Petrol | 1.4 TSI 125PS | 1.4 TSI 150PS ACT | 1.4 TSI 150PS DSG ACT | 2.0 TSI 220PS DSG | 2.0 TSI 280PS 4x4 DSG |
|------------------------|---------------|-------------------|-----------------------|-------------------|-----------------------|
| Weight | | | | | |
| Kerb weight* kg | 1,300 | 1,320 | 1,350 | 1,430 | 1,540 |
| Total weight kg | 1,920 | 1,940 | 1,970 | 2,050 | 2,215 |
| Payload** kg | 620 | 620 | 620 | 620 | 675 |
| Max roof load kg | 100 | 100 | 100 | 100 | 100 |
| Towing unbraked max kg | 680 | 690 | 710 | 750 | 750 |
| Towing braked max kg | 1,600 | 1,600 | 1,600 | 2,000 | 2,200 |
| Nose weight max kg | 90 | 90 | 90 | 90 | 90 |

| Diesel | 1.6 TDI 120PS | 1.6 TDI 120PS DSG | 2.0 TDI 150PS | 2.0 TDI 150PS DSG | 2.0 TDI 150PS 4x4 | 2.0 TDI 190PS | 2.0 TDI 190PS DSG | 2.0 TDI 190PS 4x4 DSG |
|------------------------|---------------|-------------------|---------------|-------------------|-------------------|---------------|-------------------|-----------------------|
| Weight | | | | | | | | |
| Kerb weight* kg | 1,390 | 1,405 | 1,410 | 1,425 | 1,530 | 1,430 | 1,480 | 1,540 |
| Total weight kg | 2,010 | 2,025 | 2,030 | 2,045 | 2,235 | 2,050 | 2,100 | 2,245 |
| Payload** kg | 620 | 620 | 620 | 620 | 705 | 620 | 620 | 705 |
| Max roof load kg | 100 | 100 | 100 | 100 | 100 | 100 | 100 | 100 |
| Towing unbraked max kg | 730 | 740 | 750 | 750 | 750 | 750 | 750 | 750 |
| Towing braked max kg | 1,500 | 1,500 | 2,000 | 2,000 | 2,200 | 2,000 | 2,000 | 2,200 |
| Nose weight max kg | 90 | 90 | 90 | 90 | 90 | 90 | 90 | 90 |

All measurements and weights are correct at time of going to print but may be subject to change and may vary according to passengers and load in vehicle.

* Kerb weight is the mass of the vehicle with the body in running order ** Payload includes driver (at 75kg) & equipment

| Petrol | 1.4 TSI 125PS | 1.4 TSI 150PS ACT | 1.4 TSI 150PS DSG ACT | 2.0 TSI 220PS DSG | 2.0 TSI 280PS 4x4 DSG |
|------------------------|---------------|-------------------|-----------------------|-------------------|-----------------------|
| Weight | | | | | |
| Kerb weight* kg | 1,320 | 1,340 | 1,370 | 1,450 | 1,560 |
| Total weight kg | 1,960 | 1,980 | 2,010 | 2,090 | 2,275 |
| Payload** kg | 640 | 640 | 640 | 640 | 715 |
| Max roof load kg | 100 | 100 | 100 | 100 | 100 |
| Towing unbraked max kg | 690 | 700 | 720 | 750 | 750 |
| Towing braked max kg | 1,600 | 1,600 | 1,600 | 2,000 | 2,200 |
| Nose weight max kg | 90 | 90 | 90 | 90 | 90 |

| Diesel | 1.6 TDI 120PS | 1.6 TDI 120PS DSG | 2.0 TDI 150PS | 2.0 TDI 150PS DSG | 2.0 TDI 150PS 4x4 | 2.0 TDI 190PS | 2.0 TDI 190PS DSG | 2.0 TDI 190PS 4x4 DSG |
|------------------------|---------------|-------------------|---------------|-------------------|-------------------|---------------|-------------------|-----------------------|
| Weight | | | | | | | | |
| Kerb weight* kg | 1,410 | 1,425 | 1,430 | 1,445 | 1,550 | 1,450 | 1,500 | 1,560 |
| Total weight kg | 2,050 | 2,065 | 2,070 | 2,085 | 2,265 | 2,090 | 2,140 | 2,275 |
| Payload** kg | 640 | 640 | 640 | 640 | 715 | 640 | 640 | 715 |
| Max roof load kg | 100 | 100 | 100 | 100 | 100 | 100 | 100 | 100 |
| Towing unbraked max kg | 740 | 750 | 750 | 750 | 750 | 750 | 750 | 750 |
| Towing braked max kg | 1,500 | 1,500 | 2,000 | 2,000 | 2,200 | 2,000 | 2,000 | 2,200 |
| Nose weight max kg | 90 | 90 | 90 | 90 | 90 | 90 | 90 | 90 |

All measurements and weights are correct at time of going to print but may be subject to change and may vary according to passengers and load in vehicle.

* Kerb weight is the mass of the vehicle with the body in running order ** Payload includes driver (at 75kg) & equipment




ŠKODA Solutions. Your journey, your choice.

ŠKODA Financial Services like to do things a little differently, that's why for many years we've specialised in providing simple and convenient funding options for ŠKODA drivers. It's what we know.

ŠKODA Solutions, the personal contract plan, is all about you; a flexible, competitive fixed-rate plan designed around you and your budget, putting you firmly in the Superbdriving seat.

Solutions is different because you defer a proportion of the car's value until the end of the agreement, giving you significantly lower monthly repayments than if you'd taken out a loan...ever heard of a bank being so imaginative?

Solutions is totally flexible. You get to choose the size of your deposit (from as little as one monthly payment), and a repayment period which suits you and at the end of the term you have 3 options to choose from.

- 1  Part-exchange the car for a new ŠKODA on a new Solutions contract.
- 2  Pay the optional final payment so that you own the car.*
- 3  Circumstances changed? Return the car to us (subject to terms and conditions).



DEPOSIT

As little as one repayment



BALANCE

A flexible repayment period (18-42 months)



OPTIONAL FINAL PAYMENT

3 choices at the end of the agreement

ŠKODA Financial Services also offers hire purchase, contract hire and service and maintenance plans.

Speak to your ŠKODA retailer for your personalised quotation today

*Subject to payment of the option to purchase fee. An offer of finance depends on certain conditions. Subject to status. Available to 18's and over in the UK only. ŠKODA Financial Services is a trading name of Volkswagen Financial Services (UK) Limited ("VWFS UK"). Registered in England and Wales No. 2835230. Registered Office: Brunswick Court, Yeomans Drive, Blakelands, Milton Keynes MK14 5LR. Financial and consumer credit services are provided by VWFS UK. Volkswagen Financial Services (UK) Limited is authorised and regulated by the Financial Conduct Authority, registration number 311988.

Free Insurance for 3 years.

No-one likes to think about their ŠKODA being damaged in an accident. But if it was you'd no doubt want it repaired to ŠKODA standards, by a ŠKODA trained technician using only ŠKODA genuine parts. Would your motor insurance provider guarantee to do that? We didn't think so...

That's why we came up with Ensurance - ŠKODA's free accident and repair cover.

Ensurance works alongside your existing comprehensive motor insurance policy, no matter who you are insured with, to help get you back on the road as smoothly as possible. Better still, it's free for three years and is available on both new and older models.

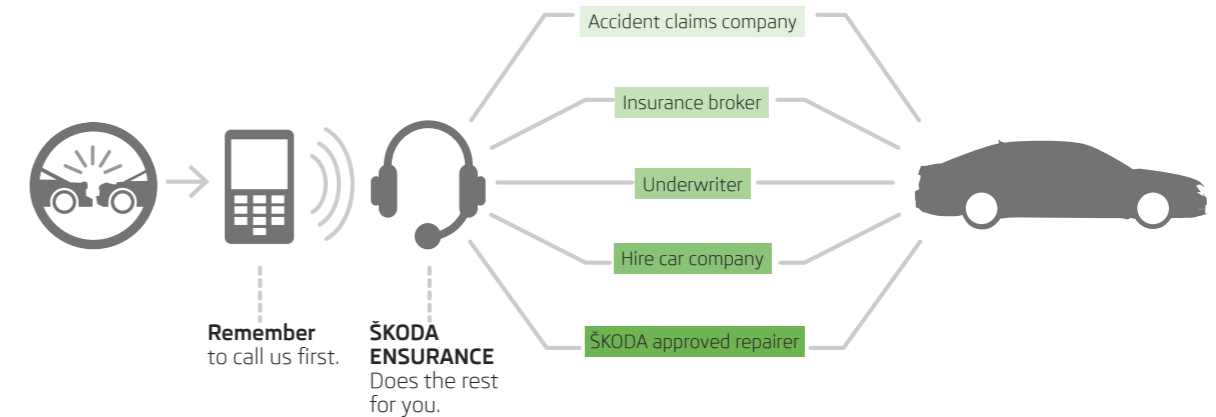
Your free Ensurance cover includes:

- > Guaranteed use of a ŠKODA approved repairer, ŠKODA trained technicians and the use of genuine ŠKODA parts and paints
- > A dedicated Claims Manager who will look after your entire claim from start to finish
- > Help to recover any uninsured losses with our Legal Expenses Cover
- > An Online claims tracker so you can keep up to date with the status of any claim

To benefit from Ensurance you'll need to activate your free cover which takes less than a minute.

We hope you don't ever have to use your policy but it's nice to know it's there - just in case.

Remember to call us first,
Ensurance will help deal
with the rest...



Your car is **guaranteed** to be repaired by a ŠKODA Insurance approved repairer. Only **genuine ŠKODA parts will be used.**

For more information and to take out cover today visit skoda-ensurance.co.uk

Motor Insurance from ŠKODA Financial Services is sold and administered by Ageas Retail Limited, registered in England and Wales No. 1324965. Registered office: Ageas House, Hampshire Corporate Park, Templars Way, Eastleigh, Hampshire SO53 3YA. Ageas Retail Limited is authorised and regulated by the Financial Conduct Authority (FCA), registration number 312468. Volkswagen Financial Services (UK) and Ageas Retail Limited are not part of the same corporate group.

Owning a ŠKODA

We make sure it's easy, fun, and stress-free.

ŠKODA customer service is officially award-winning. We have been voted Number 1 in four of the last five Auto Express Driver Power Surveys.

Network capability

You can enjoy our award-winning customer service through our network of around 165 Authorised Repairers.

As a ŠKODA customer, you will be looked after by your retailer from the moment you walk through the door and throughout the life of your ŠKODA. Your new Superb will be serviced and maintained to the highest standards by specially trained ŠKODA technicians. And when you need a spare part, you'll be happy to know that most are held in stock, or can be ordered within 24 hours.

The ŠKODA Customer Promise is a commitment from our retailers to offer:

- > Care and consideration for you and your car
- > A flexible and convenient service
- > Expertise and attention to detail
- > A clear explanation of our work

Roadside Assistance

A three year, European-wide, unlimited mileage ŠKODA Assistance policy comes free of charge with every new ŠKODA.

There's a team of specially trained Technicians who carry the right diagnostic equipment and parts to get you back on the road as quickly as possible in the unfortunate event of a breakdown. They'll even help you if you fill up with the wrong fuel, lose your car keys, or get a puncture.

Warranty

When you buy your new ŠKODA through our authorised retailer network, it is automatically covered by a three year, 60,000 mile manufacturer's warranty.

There's no mileage limit on the warranty in the first two years and for additional peace of mind there's a 12 year body protection warranty.

You can even extend your warranty to four or five years, see the option page for prices and page 51 for further details.

| Warranty cover from new | | | |
|-------------------------|--|----------------------------|--------------------------|
| First 2 years | First 3 years | 4-5 years | Up to 12 years |
| Unlimited mileage | 3 years or 60,000 miles, whichever is sooner | Optional Extended Warranty | Body Protection Warranty |

Further information

You can find lots of additional information about owning a ŠKODA on our website at skoda.co.uk. Our retailers are always happy to help with any questions, backed up our dedicated Customer Service Centre. We look forward to hearing from you soon.

Call: 03330 037 504
Email: customerservices@skoda.co.uk
Open 8.30am - 5.30pm

Technical glossary

AFS: Adaptive front light system is a feature of Bi-Xenons and allows the light beam to adapt to the car's speed, direction and the weather conditions. Urban driving emits a shorter, wider beam whilst faster driving emits a longer beam. Cornering function sees the beam turn up to 15 degrees in direction of the steering wheel's turn. The beam will also adjust according to car load, acceleration and wet weather to prevent dazzling oncoming vehicles.

Bi-Xenon lights: Bi-Xenon lights produce about 2.5 times the light of standard Halogen lights with 35% less energy consumption.

CAN Bus: the CAN Bus is an electronic data bus which links the various different electronic control systems in the car. It ensures ideal co-ordination between systems and reduces the amount of wiring needed in the car.

Fuel cut-out: should one or more of the airbags inflate after an accident, this system automatically cuts out the fuel supply, thus preventing subsequent leakage of the diesel or petrol.

Trip Computer: the trip computer not only features an impressive range of data displays, operating it is simplicity itself. A multifunction touch key enables you to call up all relevant data on the easy-to-read display. Features include external temperature, time, current fuel consumption, average fuel consumption, miles driven and average speed.

Calculating your tax liability

| | |
|---|--|
| Annual company car tax (2015/16) | |
|---|--|

To find out how much tax you will pay, simply take the P11D value, then multiply this figure by the BiK percentage. Then simply multiply this figure by 20% or 40% depending on the level of income tax that you pay.

Please note if your employer provides you with free fuel, this is treated as an additional taxable benefit.

For more information on company car taxation please visit the HM revenue and customs website hmrc.gov.uk

HHC: Hill hold control allows for a safe hill start by holding the brake for a small amount of time, reducing the risk of unintentional reversing or roll back.

TPM: Draws the drivers attention to any pressure loss in any of the tyres. Early warning can prevent damage from occurring as a result of an under inflated tyre or a defect that radically changes the cars behaviour and driveability.

DPF: diesel particulate filter is part of the exhaust system responsible for cleaning the engine exhaust gases before they enter the atmosphere. The DPF catches soot particles emitted in the exhaust gas and it works in conjunction with the catalytic converter, which reduces the amount of harmful gases entering the atmosphere. The DPF must periodically be emptied of the soot particles, a process known as regeneration. This involves elevated exhaust system temperatures. A driving style is required during regeneration, where a constant vehicle speed above 37 mph must be maintained. This does not always suit customers who make frequent short journeys or experience stop/start driving or drive within inner-city or urban areas.

CR: the completely new range of diesel engines are built on a system of Common-Rail fuel injection. The diesel engines have a high-pressure common rail direct injection fuel system and four-valve technology. As a result, the new engines are much quieter, more refined in their operation and consume less fuel, compared to the Pump Duse engines and significantly reduce emissions.

ESC: electronic stability control is designed to stabilise the dynamic handling response of the vehicle by counteracting any tendency towards oversteer or understeer. The ESC constantly compares the actual movement of the vehicle with predetermined values and according to the situation ESC reacts by braking each wheel individually (according to direction of slip) and automatically adjusting the engine's output.

Elements of ESC system:-

ABS: the anti-lock braking system prevents the wheels from locking during heavy or emergency braking, enabling the vehicle to remain steerable. When braking, wheel speed sensors measure the road wheel speed and should one or more wheels start to lock the system reduces brake pressure to that wheel.

• **ASR:** anti-slip regulation traction control ensures the Superb's stability when pulling away or accelerating. If the engine power or torque being transmitted to the drive wheels is too great, for example on a slippery road surface, engine torque is automatically reduced until optimum road holding returns, thus preventing wheelspin. A light indicates whether the ASR system is on. It can be manually switched off.

• **EDS:** the electronic differential lock system continually compares the rpm of the drive wheels, and if it identifies a difference between them which could lead to an individual wheel spinning, for example if the two wheels are on different types of surface or accelerating on wet leaves, the system brakes the wheel affected until uniform rpm of all drive wheels is restored.

• **CBC:** Braking system with electronic stabilisation

• **EBV:** Electronic distribution of braking forces

• **DSR:** Driver steering assistant

• **HBA:** Hydraulic brake assistant increases the optimal build-up of brake power. It ensures complete use of the brake system potential, thus shortening the braking distance.

• **MCB:** Multi-collision braking system helps to decrease speed after a collision through automatic braking interventions and to stabilize the vehicle. This reduce the risk of a subsequent crash due to uncontrolled vehicle movement.

• **MSR:** controls torque during engine braking

• **RBS:** Brake disc drying system

MKB: Multi-collision braking system helps to decrease speed after a collision through automatic braking interventions and to stabilise the vehicle. This reduces the risk of a subsequent crash due to uncontrolled vehicle movement.

XDS+: The XDS+ is an extension to the electronic differential lock. XDS does not respond to traction, but to the load relief of the inner front wheel of the driving axle during fast cornering. The automatic brake intervention on the brake of the wheel with reduced load prevents the wheel from spinning. Thus, the traction is improved and the vehicle can continue to follow the desired track.

Customer services

Talk to us on 03330 037 504

No matter what the query, our dedicated call centre is always ready to listen. No matter how big or small the request, speak to one of our customer care advisors to see if they can help. The call centre is open from 8.30am-5.30pm. If you're calling out of hours, then a message can be left and you'll be contacted back.

Peace of mind with a ŠKODA warranty

In the first two years of owning your car, you'll get the peace of mind of a two year unlimited mileage warranty. In addition, you'll also get a further warranty on new vehicles supplied through the appointed dealer network until the vehicle has completed 60,000 miles or the end of the third year, whichever is sooner.

Your Superb also benefits from a 3 year paint warranty and 12 year body protection warranty.

A network that's here to help

With 17 years in the top 10 of JD Power's customer satisfaction survey, our network of approximately 160 authorised repairers know how to treat a customer. You can be sure that as a ŠKODA customer, your retailer will look after you from the moment you walk through the door, throughout the life of your ŠKODA. Your Superb will be serviced and maintained to the highest standards by specially trained ŠKODA technicians. And when you need a spare part you'll be happy to know that most are held in stock, or can be ordered within 24 hours. So if top class customer satisfaction is what you're after, the ŠKODA network will be there for you.

Motability

People in receipt of the Higher Mobility Component of the Disability Living Allowance receive special help from ŠKODA. Preferential prices on low cost Contract Hire are available through your local approved Motability retailer. For full details, contact your retailer.

If your ŠKODA's in trouble, rely on ŠKODA Assistance

Completely free of charge, every new ŠKODA is covered by ŠKODA Assistance. This cover lasts for 3 years, with no mileage limit. So if you ever break down, you can use the freephone number to call out someone who really knows about ŠKODA cars to help. This service is even available in Europe, so you don't need additional breakdown cover when you're driving on the continent.

Financing your ŠKODA

We all know that times are hard, so ŠKODA Financial Services specialises in providing funding solutions for ŠKODA drivers. Regardless of whether you're a private or business user, you can choose from a range of funding options.

Finance products available are:

- Solutions – a personal contract plan
- Hire purchase
- Lease purchase
- Finance lease
- Contract hire

With all ŠKODA Financial Services products you can choose a fixed-cost maintenance plan designed to help you budget accurately. No matter what finance product you choose, your local ŠKODA retailer will be able to provide you with a personalised quote that could meet your budget and vehicle needs. ŠKODA Financial Services is a trading name of Volkswagen Financial Services (UK) Limited, Brunswick Court, Yeomans Drive, Blakelands, Milton Keynes MK14 5LR. Registered in England number 2835230.

Adding that little extra to your car

If the standard specification and factory fitted options aren't enough for you, then why not take a look at our range of retailer fitted accessories? A separate accessories brochure can be found at your local retailer, or can be ordered by phoning our call centre, or by going on-line at skoda.co.uk

Warranty

| |
|-----------------------------------|
| Exclusions and limitations |
|-----------------------------------|

Wear and tear components will only be considered under the terms of the warranty for the first of six months or 6,500 miles, whichever is soonest. These include, but are not limited to brake linings and disc pads, clutch release bearings, clutch pressure plates and centre plates, tyres, wiper blades, seat and backrest covers, floor coverings, spark plugs, batteries for key fobs and alarms, light bulbs and shock absorbers.

Mechanical adjustments including but not limited to adjustments to doors, flaps, boot lids, bonnets and sunroof, brake adjustment, clutch adjustment, v belt adjustment, ignition adjustment, headlight adjustment, steering geometry adjustments and wheel balancing are excluded.

Damage (including but not limited to the following) is excluded:

- Damage caused by your failure to take all reasonable steps to prevent mechanical damage from occurring.
- Damage or defects caused by not having the vehicle serviced in accordance with the manufacturer's guidelines.
- Damage or defects caused by improper use of the vehicle, neglect or use of the vehicle for motor sports activities.
- Damage caused by an accident.
- Damage to paintwork or chrome caused by external influences, such as climatic, chemical or industrial pollution.
- Damage resulting from the use of non-original replacement parts.

Motor Insurance from ŠKODA Financial Services is sold and administered by Ageas Retail Limited, registered in England and Wales No. 1324965. Registered office: Ageas House, Hampshire Corporate Park, Templars Way, Eastleigh, Hampshire SO53 3YA. Ageas Retail Limited is authorised and regulated by the Financial Conduct Authority (FCA), registration number 312468. Volkswagen Financial Services (UK) and Ageas Retail Limited are not part of the same corporate group.

| |
|--|
| Fixed regime: Service every 10,000 miles or one year (whichever comes first). This is recommended if the vehicle is likely to be used in the following way: |
|--|

When you order your Superb, you can choose whether your car is on a fixed or a flexible service regime. Your retailer will help you decide which regime suits how your car will be driven, enabling your car to stay in the best possible shape.

Fixed regime: Service every 10,000 miles or one year (whichever comes first). This is recommended if the vehicle is likely to be used in the following way:

- Driven fewer than 10,000 miles per annum **and/or**
- Mainly short journeys, drive mostly in towns or cities **and/or**
- High vehicle loading/towing and frequent hill climbs **and/or**
- Heavy accelerating and braking, using high revs

| |
|--|
| Flexible regime: Sensors in the engine detect when a service is needed. You will be informed of this by a service light which will show at any point between 9,000 and 20,000 miles, up to 24 months (whichever comes first). |
|--|

The flexible service regime is recommended for vehicles with a daily mileage of more than 25 miles where the vehicle is driven regularly and mainly at a constant speed with minimum vehicle and engine loading, minimal towing and driven in an economical manner.



The information in this brochure referring to specification, design, equipment, material and external appearance relates to the time at which this brochure was printed. Whilst every effort is made to ensure its accuracy, the information in this brochure is not binding and is subject to alteration. Some illustrations in this brochure depict left hand drive models, with both standard and optional equipment shown. Please confirm exact specifications, prices and colour availability with your SKODA retailer who will be notified of any specification changes as they occur.

Edition: UK 06/15

Information: 03330 037 504

Internet: skoda.co.uk

E-mail: customerservices@skoda.co.uk

Welcome to your SKODA retailer